

# STANLEY®

## SLAB SAW CART



### USER MANUAL Safety, Operation and Maintenance



© 2014 Stanley Black & Decker, Inc.  
New Britain, CT 06053  
U.S.A.  
66436 3/2016 Ver. 7



# TABLE OF CONTENTS

SAFETY SYMBOLS .....	4
SAFETY PRECAUTIONS .....	5
TOOL STICKERS .....	6
SAW CART ASSEMBLY .....	7 - 8
OPERATION .....	9
SPECIFICATIONS .....	10
ACCESSORIES .....	10
TOOL PROTECTION & CARE .....	10
SAW CART PARTS LIST .....	11
SAW CART PARTS ILLUSTRATION .....	11
SAW CART TANK PARTS ILLUSTRATION .....	12
SAW CART TANK PARTS LIST .....	12
SAW CART FOLDING INSTRUCTIONS .....	13

## IMPORTANT

To fill out a Product Warranty Validation form, and for information on your warranty, visit [Stanleyhydraulics.com](http://Stanleyhydraulics.com) and select the Company tab, Warranty.  
(NOTE: The warranty Validation record must be submitted to validate the warranty).

**SERVICING:** This manual contains safety, operation, and routine maintenance instructions. Stanley Hydraulic Tools recommends that servicing of hydraulic tools, other than routine maintenance, must be performed by an authorized and certified dealer. Please read the following warning.

## ⚠ WARNING

**SERIOUS INJURY OR DEATH COULD RESULT FROM THE IMPROPER REPAIR OR SERVICE OF THIS TOOL.**

**REPAIRS AND / OR SERVICE TO THIS TOOL MUST ONLY BE DONE BY AN AUTHORIZED AND CERTIFIED DEALER.**

For the nearest authorized and certified dealer, call Stanley Hydraulic Tools at the number listed on the back of this manual and ask for a Customer Service Representative.

# SAFETY SYMBOLS

Safety symbols and signal words, as shown below, are used to emphasize all operator, maintenance and repair actions which, if not strictly followed, could result in a life-threatening situation, bodily injury or damage to equipment.



This is the safety alert symbol. It is used to alert you to potential personal injury hazards. Obey all safety messages that follow this symbol to avoid possible injury or death.



This safety alert and signal word indicate an imminently hazardous situation which, if not avoided, will result in death or serious injury.



This safety alert and signal word indicate a potentially hazardous situation which, if not avoided, could result in death or serious injury.



This safety alert and signal word indicate a potentially hazardous situation which, if not avoided, could result in death or serious injury.



This signal word indicates a potentially hazardous situation which, if not avoided, may result in property damage.



This signal word indicates a situation which, if not avoided, will result in damage to the equipment.



This signal word indicates a situation which, if not avoided, may result in damage to the equipment.

Always observe safety symbols. They are included for your safety and for the protection of the tool.

## LOCAL SAFETY REGULATIONS

Enter any local safety regulations here. Keep these instructions in an area accessible to the operator and maintenance personnel.

---

---

---

---

---

---

---

---

---

---

---

---

# SAFETY PRECAUTIONS

Tool operators and maintenance personnel must always comply with the safety precautions given in this manual and on the stickers and tags attached to the tool and hose.

These safety precautions are given for your safety. Review them carefully before operating the tool and before performing general maintenance or repairs.

Supervising personnel should develop additional precautions relating to the specific work area and local safety regulations. If so, place the added precautions in the space provided on the previous page.

This slab saw cart will provide safe and dependable service if operated in accordance with the instructions given in this manual. Read and understand this manual and any stickers and tags attached to the tool and hose before operation. Failure to do so could result in personal injury or equipment damage.



- The operator must start in a work area without bystanders. Do not allow bystanders within 15 feet of cart while operating the machine. Flying debris can cause serious injury.
- Do not operate the slab saw cart unless thoroughly trained or under the supervision of an instructor. Establish a training program for all operators to ensure safe operation.
- Always wear safety equipment such as goggles, ear and head protection, leg protection, gloves, snug fitting clothing, safety shoes at all times when operating the slab saw cart.
- The operator must be familiar with all prohibited work areas such as excessive slopes and dangerous terrain conditions.
- Do not over-reach. Maintain proper footing and balance at all times.
- Do not operate a damaged, improperly adjusted, or incompletely assembled saw cart.
- The machine is to be operated by one person only.
- Never remove the wheel guard from the tool that is attached to the slab saw cart.
- For quick shut off, release the handle bar lever and make sure the blade stops moving when the control lever is released.
- Descend into cutting surface at a slow and safe speed, determined by blade type.
- Move forward at a slow and safe speed, determined by blade type.
- Never modify the hand control lever in order to leave the saw cart unmanned while motor and blade are running.
- Cutting blade should be completely stopped before removal from cut.
- Disconnect hoses and power source before performing any maintenance work.
- Correct operating position is directly behind the handle bars, do not stand to one side or the other during operation.
- Keep both hands on the cart at all times while operating.
- Check and maintain the cart and tool every 10 to 20 hours.
- Remove or control the water slurry to prevent yourself or others from slipping while cutting.
- Provide adequate ventilation in closed areas when operating a gas or diesel hydraulic power source.
- Always be well rested and mentally alert before operating the slab saw cart.
- Do not start cutting until you have a clear work area and secure footing.
- Keep the handle dry, clean and free of hydraulic fluid.
- Do not use the saw near any under ground utilities and know the location of buried or covered electrical services before starting work.
- Turn off and disconnect the power source before removing the blade.
- To avoid personal injury or equipment damage, all slab saw cart repair, maintenance and service must only be performed by authorized and properly trained personnel.
- Check all components regularly for wear and general condition.
- **Warning:** Use of this tool on certain materials during demolition could generate dust potentially containing a variety of hazardous substances such as asbestos, silica or lead. Inhalation of dust containing these or other hazardous substances could result in serious injury, cancer or death. Protect yourself and those around you. Research and understand the materials you are cutting. Follow correct safety procedures and comply with all applicable national, state or provisional health and safety regulations relating to them, including, if appropriate arranging for the safe disposal of the materials by a qualified person.

# TOOL STICKERS



47351  
Composite Warning Sticker



05152  
Stanley Sticker



17572  
Pinch Point Sticker



47352  
Lifting Eye Sticker



# SAW CART ASSEMBLY

## SAW CART ASSEMBLY INSTRUCTIONS

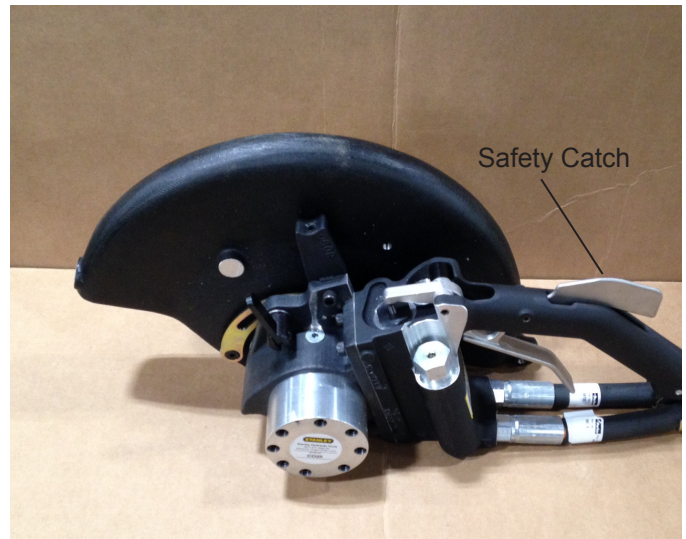
1. Your slab saw cart comes fully assembled from the factory, the only adjustments necessary may be the throttle cable after the cut-off saw has been installed.



2a. When mounting the cut-off saw to the saw cart, the tubular handle attached to the cut-off-saw must be removed. This will allow the cut-off-saw to be mounted on the saw cart.

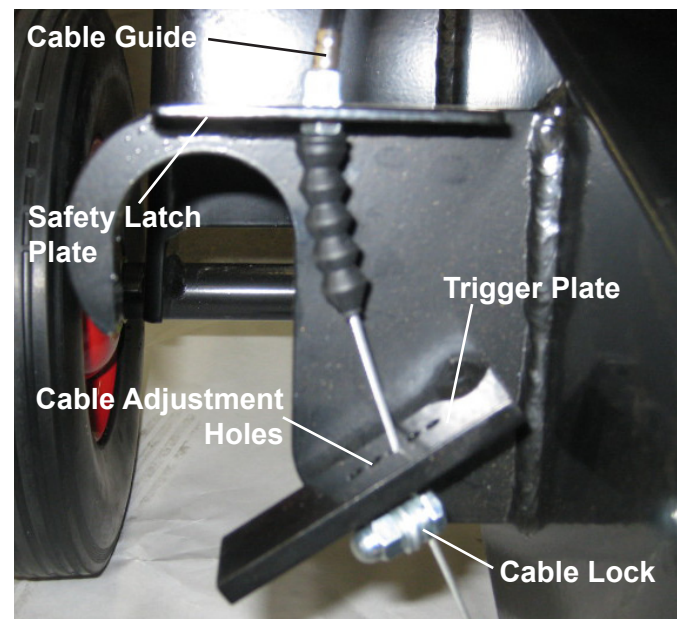


2b. Cut-off saw with handle removed shown below.



### NOTE:

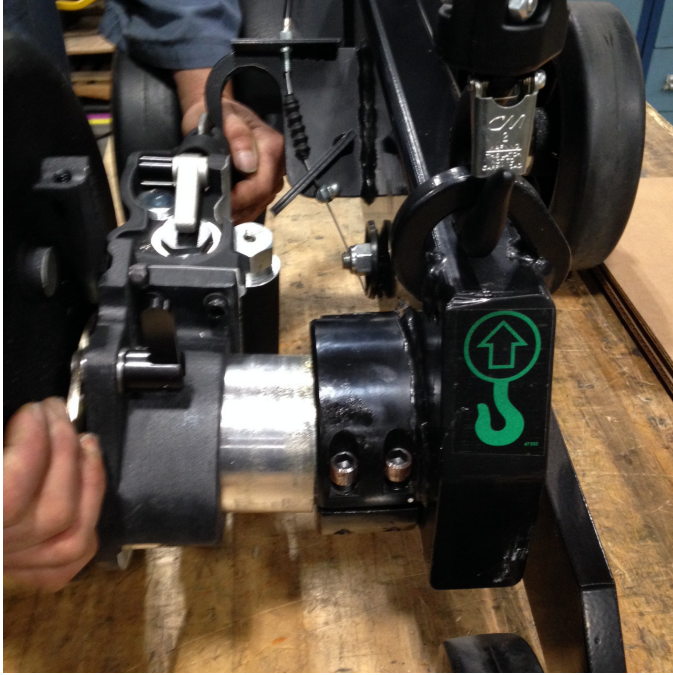
Prior to mounting the cut-off saw the safety catch on the cut-off saw must be depressed and is held down by the safety latch plate on the saw cart at all times for the trigger to operate. See location of safety latch plate pictured below and safety catch pictured above.





## SAW CART ASSEMBLY

3a. When mounting the cut-off saw, make sure it is pushed backed fully into the motor mount, rotate the handle up to where it locks in. Make sure the safety catch on the cut-off saw is depressed and under the safety latch plate for the trigger to operate.

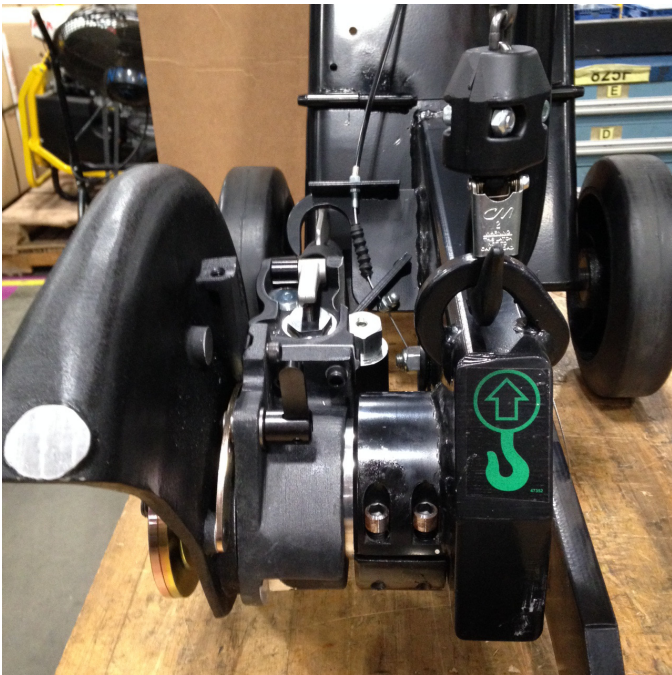


3c Side view of mounting.



4 After mounting the cut-off-saw, make sure the cutting blade is perpendicular to the floor and parallel with the cart frame.

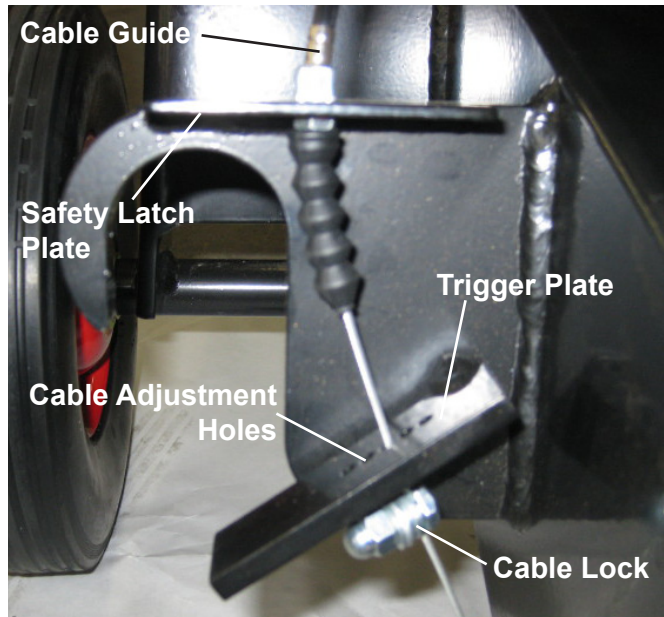
3b. Motor mount.





# OPERATION

5. Adjust the cable lock and the adjustment screw on the control lever on the handle to acquire the correct trigger control. Additional full trigger movement can be attained by moving the cable to a different hole location on the trigger plate (see below).



**NOTE:**

**The safety catch on the cut-off saw must be depressed by the safety latch plate at all times for the trigger to operate.**

6 Before operating the cut-off saw and before attaching any hydraulic power source check that the wheel guard on the cut-off saw is in place and that the cutting wheel is secure.

**NOTE:**

**If the saw is to be removed from the cart and used in a hand-held manner, make sure to re-attach the tubular handle to the cutting head body before using.**

## Saw cart operating instructions

- For operation of the attached tool (saw motor) and power source, consult the respective operating manuals before you begin.
- Follow all safety precautions in this manual along with any respective manuals relating to attached tools and power sources.
- When you are ready to cut, align the cut line indicator on the line to be cut.
- Make sure the water hose and its connections are secure and the water coolant is flowing easily.
- To engage the motor and blade, slowly squeeze the hand control lever.
- Slowly and safely descend the blade into the cutting surface to the desired depth by turning the depth control crank counter-clockwise.
- Move slowly and safely forward along cutting line until desired cut is achieved.
- Disengage the motor and blade by releasing the hand control lever.
- After the blade has stopped rotating, lift the blade out of the cutting surface by turning the depth control crank clockwise until the blade is safely clear of the surface.
- When operation is complete, turn off power source and disconnect hoses.

## Maintenance

1. Item 24 on the parts illustration page is a grease fitting, apply grease once a month under normal use or twice a month under heavy use.
2. Lubricate all moving parts weekly with a general lubricant.

## SPECIFICATIONS

Length.....37.2 inches/94.5 cm  
Width .....20.6 inches/52.3 cm  
Height .....41 inches/104 cm

## ACCESSORIES

CO25 Water Kit (Fits on Stanley's CO25 Cut-Off Saw)..... 33228

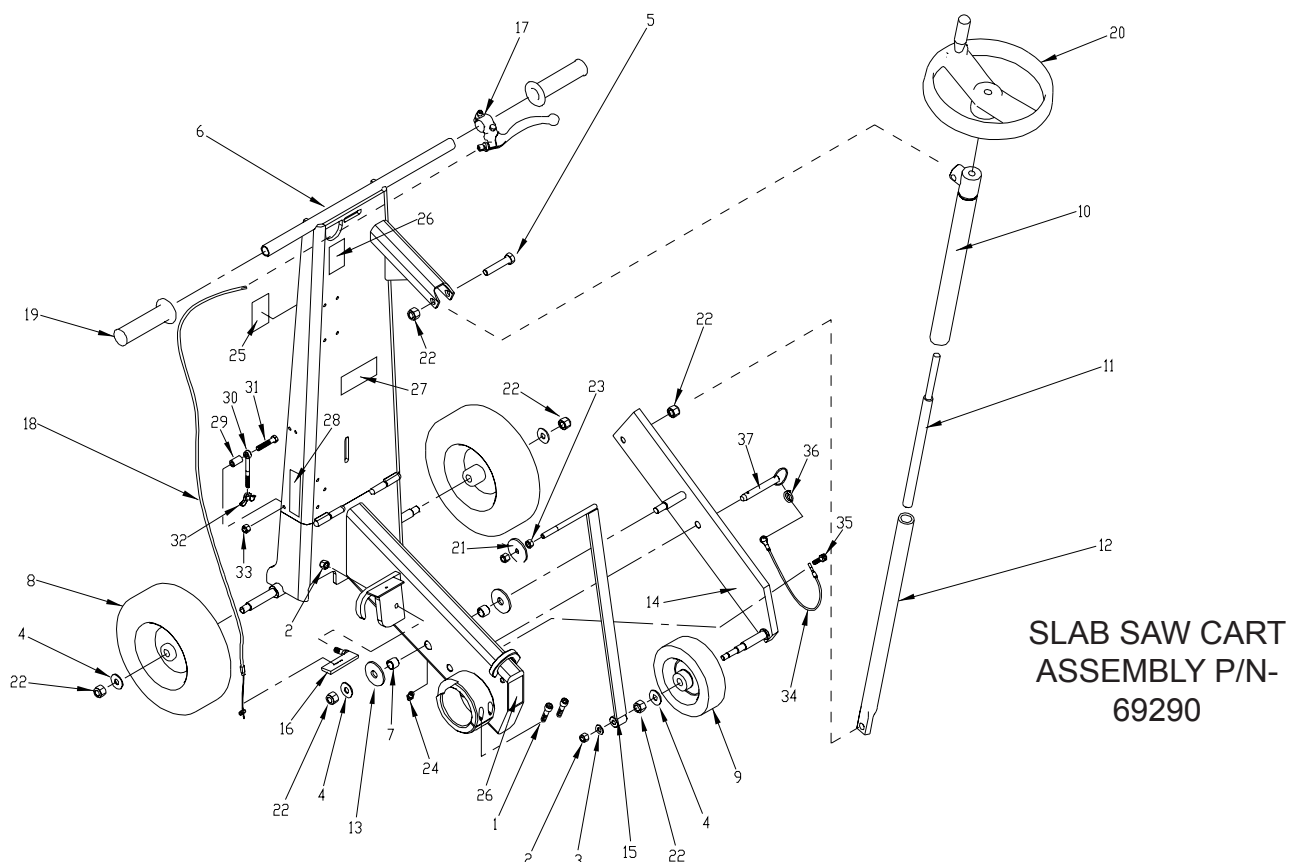
## TOOL PROTECTION & CARE

### NOTICE

In addition to the Safety Precautions found in this manual, observe the following for equipment protection and care.

- Make sure all couplers are wiped clean before connection.
- Make sure the circuit PRESSURE hose on the tool (with male quick disconnect) is connected to the **IN** port. The circuit RETURN hose (with female quick disconnect) is connected to the opposite port. Do not reverse circuit flow. This can cause damage to internal seals.
- Always store the slab saw cart in a clean dry space, safe from damage or pilferage.
- Do not use the slab saw cart for applications for which it was not intended.

# SAW CART PARTS ILLUSTRATION

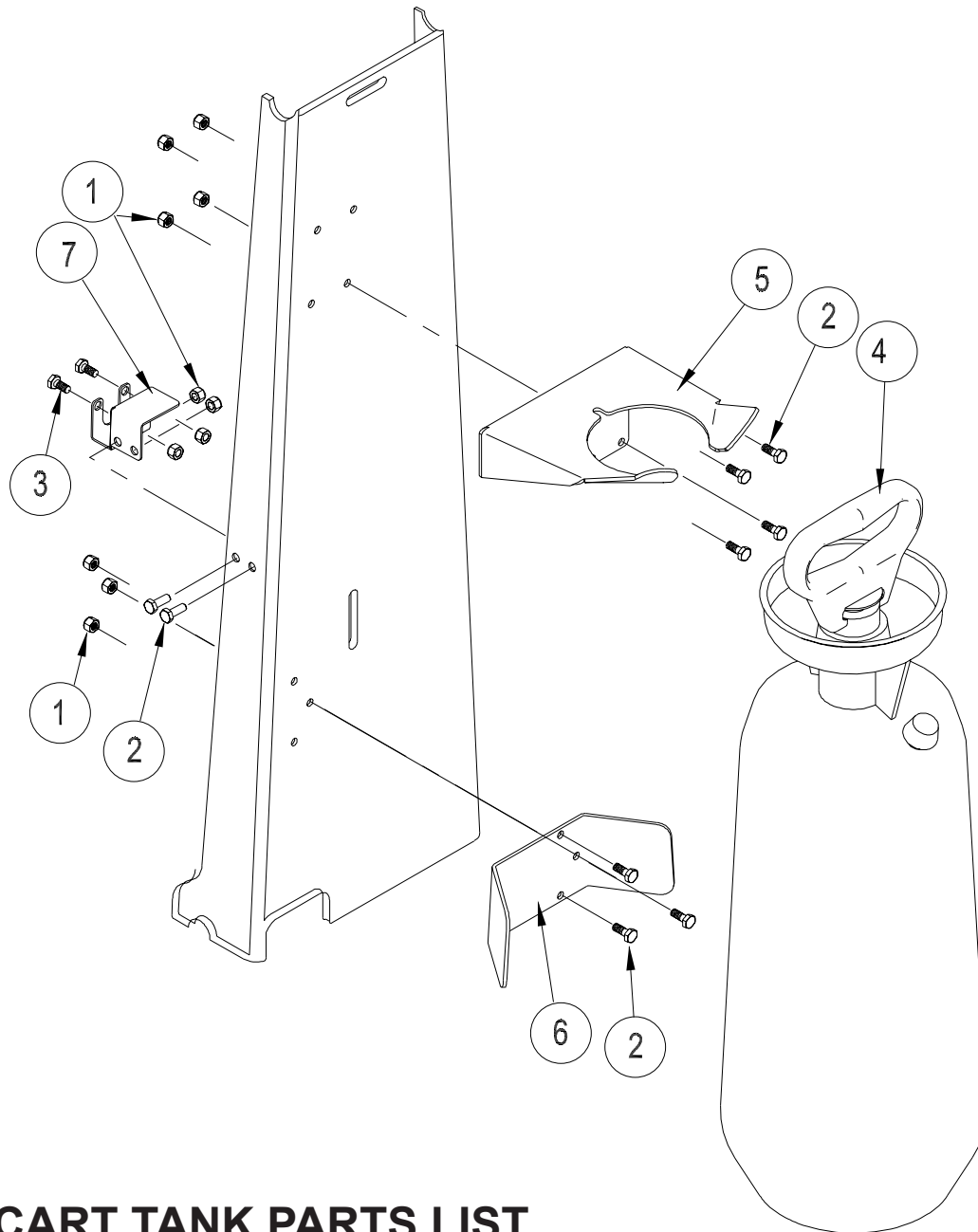


## SAW CART PARTS LIST

ITEM	PART NO.	QTY	DESCRIPTION
1	03600	2	HSCHS
2	04353	3	NYLOCK NUT
3	04585	1	WASHER
4	05694	4	WASHER
5	20382	1	HHCS
6	69291	1	SLAB SAW CART WELDMENT
7	69297	2	BEARING PEER
8	69305	2	TIRE & WHEEL 10 × 2.75, 5/8 IN FLANGE BUSHING
9	69307	1	TIRE & WHEEL 6 × 2, 5/8 IN FLANGE BUSHING
10	69310	1	TUBE ADJ WELDMENT
11	69311	1	ADJUSTMENT SCREW
12	69366	1	ADJUSTMENT NUT TUBE
13	69367	2	WASHER PLASTIC SPACER
14	69369	1	PIVOT PLATE WELDMENT
15	69538	1	INDICATOR WELDMENT
16	69543	1	TRIGGER PULL WELDMENT
17	69544	1	THROTTLE LEVER
18	69545	1	CABLE, 45 IN

ITEM	PART NO.	QTY	DESCRIPTION
19	69546	2	HAND GRIP
20	69636	1	HAND WHEEL, 10 IN W/ HANDLE 1/2-13 HUB
21	69637	1	WASHER PLASTIC INDICATOR
22	371500	6	NYLOCK NUT
23	371503	1	HEX NUT
24	372003	1	GREASE FITTING
25	47351	1	COMPOSITE SAFETY STICKER
26	47352	2	LIFT POINT STICKER
27	05152	1	STANLEY STICKER
28	17572	2	PINCH POINT STICKER
29	71758	2	SPACER
30	71761	2	SWING EYE BOLT
31	15561	2	CAPSCREW
32	71759	2	WING NUT
33	00719	2	LOCK NUT
34	71906	1	LANYARD
35	00154	1	CAPSCREW
36	71907	1	SPLIT RING
37	71898	1	QUICK RELEASE PIN

# SAW CART PARTS ILLUSTRATION



## SAW CART TANK PARTS LIST

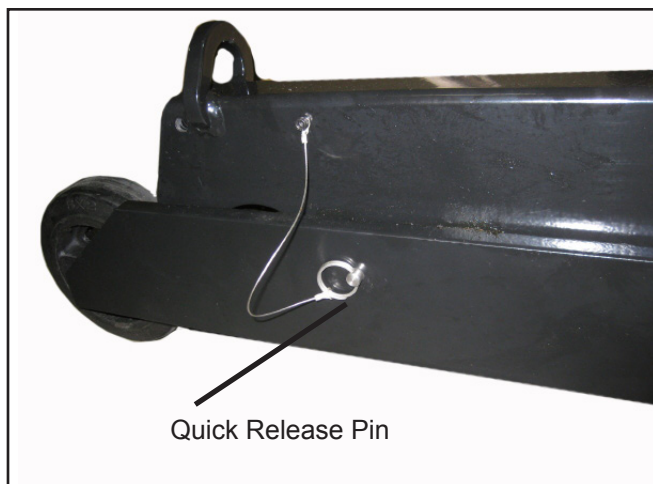
ITEM	PART NO.	QTY	DESCRIPTION
1	00719	11	NYLOCK NUT
2	15476	9	HHCS
3	32412	2	HHCS
4	41240	1	WATER TANK
5	69296	1	TANK TOP BRACKET
6	69542	1	TANK BRACKET
7	69914	1	NEEDLE VALVE CLAMP
	69704	1	WATER TANK KIT (INCL ITEMS 1-7)



# SAW CART FOLDING INSTRUCTIONS



Slab Saw Cart in Folded Position



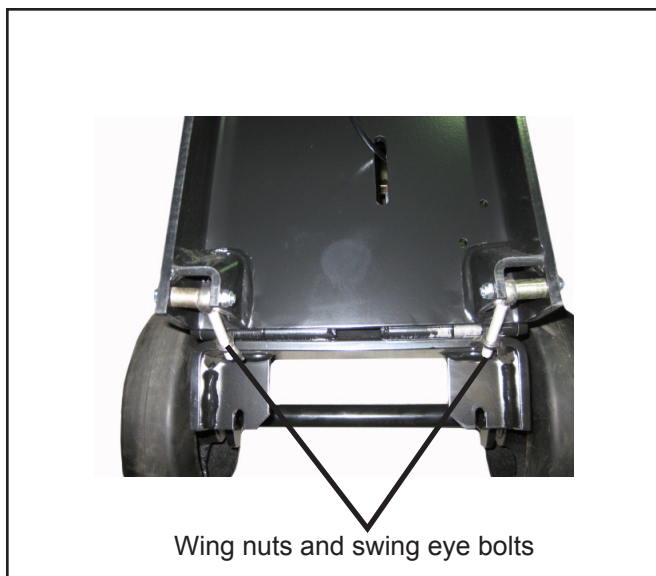
Quick Release Pin

## FOLDING INSTRUCTIONS:

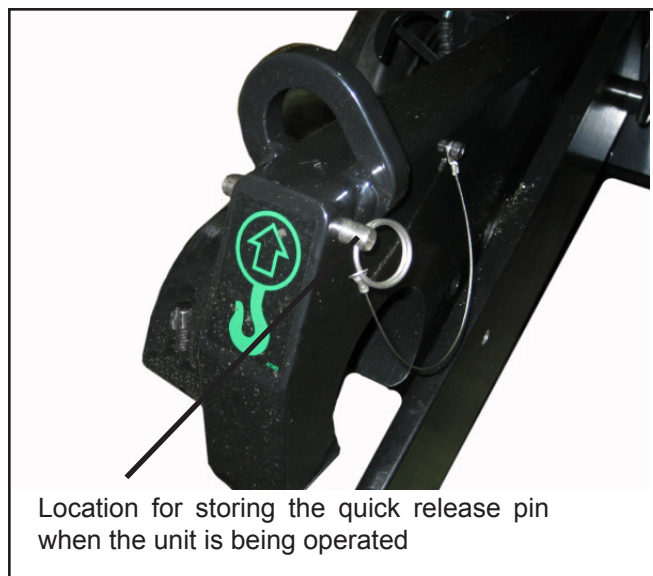
1. Install the "Quick Release Pin" into the hole shown above, this pin must go through item #14 pivot plate weldment and into the slab saw cart weldment. To do this, turn the hand wheel until the two holes are aligned and insert the pin.
2. With the quick release pin installed, loosen the two wing nuts on the back on the unit and swivel the two swing eye bolts out of their locked positions. Then turn the hand wheel allowing the unit to fold down.

## CAUTION

When folding the saw cart for storage or transport make sure the "Quick Release Pin" is inserted in the correct hole location as shown above before you disconnect the two wing nuts that are on the back saw cart. Without the quick release pin installed and the wing nuts are removed the saw cart could fold down suddenly causing injury or damage.



Wing nuts and swing eye bolts



Location for storing the quick release pin when the unit is being operated

# **STANLEY®**

Stanley Hydraulic Tools  
3810 SE Naef Road  
Milwaukie, Oregon 97267-5698 USA  
(503) 659-5660 / Fax (503) 652-1780  
[www.stanleyhydraulics.com](http://www.stanleyhydraulics.com)