



Hydraulic Equipment Catalog



BRUTE DITEQ **Blades**
Takeover the Market

***Hydraulic Equipment
The Perfect Balance
of Power and
portability***



Difference! Discover the DITEQ

DITEQ Corporation is a solutions driven company that manufactures leading edge diamond tooling and equipment for the concrete industry. We put the customer first with our state of the art manufacturing facilities in Kansas, Southern California, Georgia, and South Korea. Our aim is to provide you with dependable, high quality products and exceptional service before and after the sale.

In order to better serve our clients, we have partnered with some of the leading manufacturers in our industry. Our partners provide additional high quality performance equipment, tooling, and accessories for a complete job site solution. DITEQ maintains North American exclusivity with the HYCON and Shibuya product lines. We see the incredible potential, growth, value, and reliability in Hydraulic equipment and tooling. Please enjoy our expanded offerings in this catalog.



- Lightweight – highest power to weight ratio of any type of hand tools on the market today
- Systems approach – one powerpack can run a variety of different types of tools
- Highly efficient power with minimal energy losses
- Portable – lower weight at the point of use
- Ergonomic
- Convenient
- Tools can be used in almost any weather conditions
- Tools can be used underwater
- Lower maintenance time and cost.
- High motor torque consistently throughout the full range of the tools RPM

• Power packs p 6-12

• Ring Saws & Blades p 14-15

• Hand Saws p 18-21

• Hand Saws Blades p 22

• Wall Saws p 23

• Chain Saws/Chains p 24-27

• Core Drills p 28-29

• Core Bits p 30-34

• Breakers p 36-47

• Trash Pumps p 48-50

• Accessories

Hydraulics Has An Advantage Over Pneumatics

- Much Quieter. Compressed air is very noisy, both sides (compressing the air and the exhaust air release)
- Less Maintenance
- Hydraulic circulates oil through the tool whereby pneumatics systems need filters, water separators, and oilers in the air stream. All maintenance items
- Hydraulic tools have a MUCH higher Power-to-Weight ratio. Hydraulic tools have significantly higher performance
- The hydraulic power packs are much more portable, require significantly less fuel consumption



Hydraulics has an Advantage over Electric Motors and Hi-Cycle systems

- Hydraulic Tools can be operated in Wet locations without the added fear of Electric Shock Hazards
- The Weight of the Hydraulic tool is lighter than Electric or Hi-Cycle tools
- Higher Power-to-weight ratio
- Portable Power packs can minimize long electric cord power losses
- Handheld core drills have a pressure relief instead of a clutch that is on electric drills. The pressure relief will minimize tool kick and twist if a bit gets stuck
- The Hydraulic drills can be operated safely with more power at the bit thus can be used to turn larger diameter bits
- Hydraulic tools has much lower maintenance cost
- Hydraulic tools can be more powerful to reduce labor cost by getting the job done quicker



A hydraulic Power pack on top of an Air Compressor, both sized to operate the same rated Breaker.



Hydraulics has an Advantage over Gasoline Engine Hand Tools

- The hydraulic hand tools are lighter than a gasoline powered tool because the engine is not in the operators hand
- The hydraulic tools have much lower maintenance cost
- The hydraulic tools can be used in a tighter space with less fear of CO poisoning to the operator
- Hydraulic tools have much higher power-to-weight ratio for a significant improvement in performance.
- The Hydraulic tools can be operated on many skid steer or loader auxiliary circuits

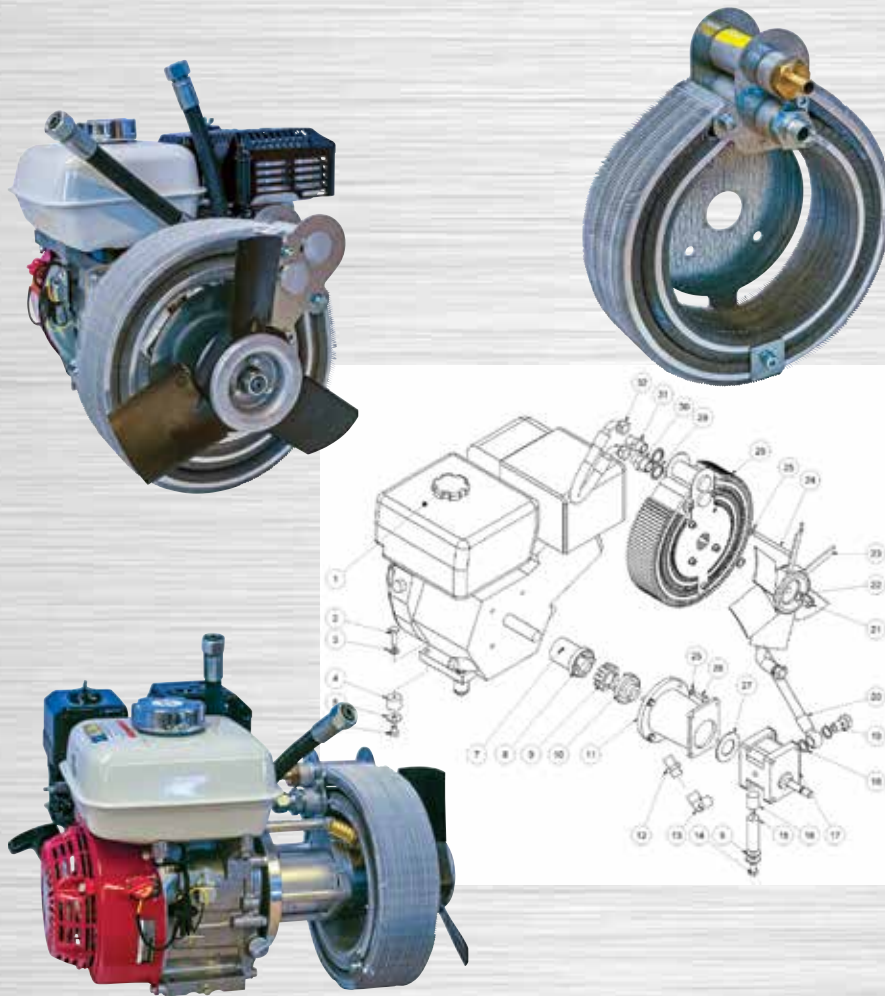
The HYCON Hydraulic Power packs are Air Cooled, very portable, fabricated with a very durable sturdy welded steel frame, easy to operate, easy and open access for service and maintenance, Simple design for low maintenance and repair cost, and very affordable.

Not all Power packs are created equal. HYCON built the Envy of the Industry in the HPP series Power packs.



Rigid Steel Frame Compact Balanced

The HYCON Power packs have a special RING COOLER design on the HPP06 - HPP23 which represents state of the art in air-cooled Power packs. The traditional coolers have a radiator design with the air drawn through the flat face of the radiator surface and is prone to clogging. The circular design allows continuous flow over the large circular fin design. The length of the cooler element is as much as 5 ft. With a width of 4" the entire cooling area is as much as 232 sq. in. Compared with the traditional cooler dimensions L x W, 8" x 4" = 48 sq. in. There is a massive cooler surface difference.



*Full filtration of hydraulic oil when running.
Re-filling is through return filter assuring
100% clean oil in system.*

Easy To Use Simple Controls

Cooler Running Air-Cooled Power Packs

Lightweight



05/07/2024



27 HP Power Packs Dual or Single Output 16 GPM Max Output

Air Cooled
No Water
Required



- 27HP Electric start Briggs Vanguard
- *HPP27VMF Dual/Single outputs
- *Connection A Runs 1 Tool @ 8-16 GPM
- *Connection B&C Runs 2 Tools @ 4-8 GPM
- Working pressure PSI 1740
- Max pressure PSI 2300
- Fuel capacity 12 Gallons
- Large oil cooling system pump mounted fan
- HYD oil capacity 4 Gallons
- 1 Year HYCON warranty
- 3 Year B&S Vanguard warranty
- Pneumatic center balanced wheels
- Pull out handle for easy transportation
- 375 LBS With lifting hooks
- Dimensions L x W x H 41" x 29" x 33"
- Parts and service available in USA

HYCON HPP27VMF MULTIFLEX

Introducing the FLEXLINE series of Power packs. It is intended for simultaneous operation of 2 hydraulic tools. The FLEXLINE power pack has the widest range of flow settings on the market. No other powerpack features 8 different flows.

In other words – the MULTIFLEX will operate any tool combination! With its compact size, it can be easily transported in any work van or truck. Lightweight enough that 2 people can easily lift and move.

HYCON power packs are designed for professional users who expect maximum operating time, low service cost and durability.

**Connection A cannot be used simultaneously with connections B and C.*

HPP27VMF P/N: P00023 Dual/Single Output

**See Vanguard's website for warranty details*

05/07/2024



23 HP Power Packs HPP23-V Flex 12 GPM Max Output

Air Cooled
No Water
Required



- 23HP Electric start Briggs Vanguard
- Oil Flow 5-12 GPM Variable
- Working pressure 1740 PSI
- Max pressure 2,300 PSI
- Recoil and electric starter
- 2.9 Gallons HYD Oil Capacity
- 2.2 Gallons fuel capacity
- HD HYD Oil cooling system
- 1 Year HYCON Warranty/3-Year Vanguard Warranty
- 238 LBS with lifting hooks
- Pull out handle for easy transportation
- Parts and service available in USA
- Dimensions L x W x H 34" x 24" x 27"

The HPP23V FLEX is the best 12 GPM Power pack on the market. Features variable flow adjustment from 5/8/10/12 GPM. It is extremely popular among users of high-performance diamond tools for drilling and cutting concrete. They are users who often need the high power and want a robust, high quality 12 GPM powerpack. With its great flow range, the HPP23V FLEX can operate all tools – it is typically used for Breakers, cut-off saws, diamond chainsaws, ring saws and other 5-12 GPM Tools. HPP23V FLEX has both electric and recoil start, so you can start it even with a dead battery.

The benefits of hydraulic tools are numerous. Hydraulic systems are cheaper to buy, run and maintain, leading to obvious cost reductions for the operator. The rugged design of the machinery also offers trouble-free performance and powerful, but economic performance. The hydraulic solutions from HYCON offer our customers a number of significant advantages.



HPP23V-Flex P/N: P00022

**See Vanguard's website for warranty details*

05/07/2024



18 HP Power Packs HPP18 480V 3P Electric 12 GPM Max Output

Air Cooled
No Water
Required



HPP18E can be set to 5, 8, 10, 12 GPM Powerpack for professional and specialized companies within concrete drilling and cutting. The output is regulated by a frequency converter. This way the motor RPM is adjusted to the exact oil flow required –meaning no cooling problems. The HYCON HPP18E FLEX is the only powerpack on the market with this technical feature. The powerpack needs no water cooling, as it has integrated oil cooler, which is a great advantage – especially in the winter time.



- HPP18E Flex
- 5/8/10/12 GPM
- Nominal PSI 1750
- Max PSI 2300
- Wide wheels
- Hydraulic oil capacity 3 Gal.
- Pull out handle for easy transportation
- 4-Speed motor with soft start
- GPM/Amps 5/9A~8/13A~10/17A~12/2
- 300 LBS with lifting hooks
- Dimensions L x W x H 31.7" x 24.6" x 27.7"
- Remote included with P/N: P00032

HPP18E No Remote P/N: P00027
HPP18E With Remote P/N: P00032

05/07/2024



18 HP Power Packs Dual or Single Output 10 GPM Max Output

Air Cooled
No Water
Required



HPP18V-Flex is for pros who demand the highest performance of their diamond tools. It features 5-8-10 GPM flows for running the larger Cut-Off saws, Ring Saws and the larger breakers. The HYCON power packs have a unique RING COOLER design which allows them to operate in the hottest of climates. This RING COOLER represents state of the art technology in air-cooled power packs. The traditional coolers have a radiator design with the air drawn through the flat face of the radiator surface and is prone to clogging. The circular design allows continuous air flow over the large circular fin design. The length of the cooler element is as much as 5ft. With a width of 4" the entire cooling area is as much as 232 sq. in. Compared with the traditional oil cooler dimensions of L x W, 8" x 4" = 48 sq. in. Massive difference in the oil cooler surface area.

HPP18VMF Multiflex is built on the same platform as HPP18V Flex but with a tandem gear pump for two independent outlets.

A 3rd outlet where the two pumps are connected for a flow up to 10 GPM makes it perfect for operation of two 3-5 GPM tools independently or one 10 GPM tool with full performance.

This power pack has as much as eight different flow settings. In other words, MULTIFLEX can operate any tool! With both electric and recoil start it can be started, even if the battery is dead.

HYCON power packs are designed for professional users who expect maximum operating time, low service cost and durability.

**Connection A cannot be used simultaneously with connections B and C.*

- HPP18V Flex single output
- *HPP18VMF dual or single outputs
- Direct drive fan no belts to replace
- Total filtration of HYD oil & Easy oil filter change
- Large pump mounted fan & High capacity cooling of oil for operation in any climate
- HPP18-V Flex GPM 5-10 Variable
- *HPP18VMF Dual output
- *Connection A Runs 1 Tool @ 5-10 GPM Variable
- *Connection B&C Runs 2 Tools @ 3-5 GPM
- Working pressure 1740 PSI
- Max pressure 2300 PSI
- Removable panels for easy service access
- Pull out handle for easy transportation
- Pneumatic center balanced wheels
- 247 LBS with Lifting Hooks
- Fuel tank capacity 2.2 gal
- 1 Year HYCON warranty/3 Year Vanguard warranty
- Dimensions L x W x H 34" x 24" x 27"

P/N: P00024 Dual/Single Output

P/N: P00021 Single Output

**See Vanguard's website for warranty details*

05/07/2024



14 HP Power packs HPP14 Flex 8 GPM Max Output

Air Cooled
No Water
Required



The perfect power source for high performance tools like breakers, cut-off saws, core drills, submersible pumps, ring saws and small diamond chainsaws.

Power Pack with 14 HP, compact, low weight, and is easy to transport in any vehicle. In addition it comes with integrated engine oil level safety switch. With its variable flow adjustment from 0 to 8 GPM.

The HYCON hydraulic power packs can be used literally anywhere; fitted with wheels and handles, they are easy to move around on construction sites and other tough terrains. Therefore, our power packs can be described as portable hydraulic power units.

HYCON hydraulic power packs are designed for professional users who value maximum operating time, low service cost and durability.

- HPP-14 Flex 14 HP Vanguard 25V3 Motor
- Fuel tank capacity 1.5G
- Oil flow GPM 5-8 variable
- Working pressure 1750 PSI
- Max pressure 2175 PSI
- Recoil starter
- Integrated Cyclonic Air Cleaner
- HYD oil tank capacity 2.3 Gal
- 1 Year HYCON warranty/3 Year Vanguard warranty*
- 178 LBS with lifting hooks
- Dimensions L x W x H 28" x 22" x 25"

**See Vanguard's website for warranty details*

HPP14V-Flex P/N: P00033

05/07/2024



9 HP Power packs HPP09 5 GPM Max Output

Air Cooled
No Water
Required



The HPP09 operates any 5 GPM tools such as breakers, saws, pumps and core drills at maximum performance.

Featuring a hydraulic throttle control system (Power On Demand) that automatically speeds up the engine when the connected tool is activated.

It is very compact, which enables transportation in the back of a car or in a van.

The investment in this power pack and a breaker is usually less than half the price of a 4m³ compressor and breaker, and the performance is the same.

The HPP09 comes standard with the HYCON POR system (Power on Request) = automatic regulation of power.

- 9 HP Honda GX270 motor with recoil starter
- Oil Flow 0-5 GPM Variable
- Working Pressure 1740 PSI
- Max 2175 PSI
- HD Oil cooling system direct drive cooling fan
- Full filtration of hydraulic oil & Easy oil filter change
- Engine low oil alert and shutdown protection
- Removable panels for easy service access
- Pull out handle for easy transportation
- Flush face quick hose connections included
- HYD Oil tank capacity 1.8 gal
- Fuel tank capacity 1.58 gal
- 1 Year HYCON Warranty/3-Year Honda Warranty
- 150 LBS with lifting hooks
- Dimensions L x W x H 25" x 19" 22"

HPP09 P/N: P00029

05/07/2024



6.5 HP Power packs HPP06 5 GPM Max Output

Air Cooled
No Water
Required



The HPP06 is an ideal lightweight powerpack for rental or light construction. The engineers at HYCON designed all their power packs for easy access for serviceability to keep your equipment out on the job not in the repair shop. Oversized cooling system for longer service life in the hottest conditions

- HPP06 Variable flow adjustment
- HD HYD Oil cooling system
- Full filtration of HYD oil
- Easy hydraulic oil filter change
- Direct drive oil cooling fan no belts to change
- Removable panels for easy service access
- Pull out handle for easy transportation
- Flush face quick hose connections included
- 6.5 HP Honda GX200 motor with recoil starter
- Fuel tank capacity 0.8 gal
- HYD Oil tank capacity 1.8 gal
- Oil Flow 0-5 GPM variable
- Working pressure 1450 PSI
- Max pressure 1595 PSI
- Low engine oil shutdown system
- 1 Year HYCON Warranty/3 Year Honda Warranty
- 150 LBS with lifting hooks
- Dimensions L x W x H 25" x 16" x 22"



HPP06 P/N: P00028

05/07/2024



Skid steer converter P/N:

- 3/4" Conversion Kit **141565**
- Converts your skid steers 3/4" to HYCON
- Connects to the flow divider input side
- Includes flush face fittings



Nozzles

- 5* GPM Flow P/N: 141152
- 8* GPM Flow P/N: 141153
- 10* GPM Flow P/N: 141154
- 12 GPM Flow P/N: 141203

**Included with Flow Divider*



- Output 5/8/10/12* GPM
- Output Pressure relief valve 2320 PSI
- 12* GPM Adapter sold separately P/N:141203
- Max Input Oil Flow 21 GPM
- Max Input Pressure 3500 PSI
- 5 GPM output nozzle pre-installed
- Included Nozzles to convert output to 5/8/10 GPM
- 3/4" Skid steer conversion kit sold separately P/N: 141565

Flow Divider P/N: 140746

The HYCON flow divider replaces the need for power packs and is perfect to drive all HYCON tools on worksite where there already is an hydraulic machine like an backhoe, skid-steer or mini-excavator in place.

Simply connect the preset Flow divider to the Hydraulic Power Take Out (PTO) and you are assured correct flow, pressure and rotation on saws, pumps and other tools needed on the job site.

Use the HYCON HBU630 booster to Increase pressure and possibilities of use. The HYCON pressure booster will be a perfect ad-on to your set of tools, and it opens a number of possibilities to also use high-pressure tools

- 25' Pairs x 1/2" ID Return P/N: 151867
- 50' Pairs x 1/2" ID Return P/N: 151859
- 150' Pairs x 3/4" ID Return P/N: 153128

- Sold in pairs only
- Flush face fittings included
- Heavy duty abrasion resistant outer covering
- Longer service life in harsh environments



HBU630 Pressure Booster P/N: 152382

- Max Input Pressure 2465 PSI
- Working Pressure 870 - 1305
- Max Output Variable 9135 PSI
- Flow Output .31 - 1.3 GPM
- Connect to any 5 GPM powerpack or hydraulic outlet
- Intensification factor 1:10



- 5 Gallons
- AW68 Hydraulic fluid
- Use in medium to hot climates



Hydraulic Oil AW68 P/N: 152470

05/07/2024

HRS400 16" Ring Saw

P/N: H00018



The HYCON hydraulic ring saw offers you the most efficient and productive choice for deep concrete cutting. Imagine all the new work it will open up to your business and for you to carry out at minimum cost. All parts run in oil – no down time and service is minor. The HYCON ring saw has a unique design and state of the art drive mechanism that will give you many hours of use and long lasting wear parts that will ensure you a low operating cost. If you want the deepest cutting ring-saw, invest in the best – the HYCON HRS400

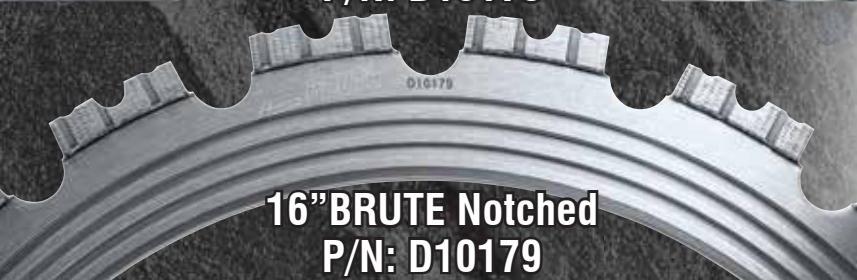
- Required 8-10 GPM
- Working pressure 2300 PSI
- Max pressure 2500 PSI
- Max return pressure 580 PSI.
- Weight 24 LBS.
- Motor 4100 RPM @ 8GPM
- Blade 1765-2340 RPM
- Blade diameter 16"
- Cutting depth 11.75"
- Vibration level <2.5m/sec2
- Water supply MIN. 1GPM at 30PSI
- Upgraded heavy duty motor design
- Light weight –high power
- High power – up to 18 HP
- Ergonomic design for operator comfort
- 1/3 less cutting cost than chainsawing
- Guide rollers last 3 time longer than competitors
- Long lifetime – all parts run in oil
- Easy change of blades
- Works underwater
- Lower vibrations and weight
- ASCO Safety system



05/07/2024



16"BRUTE Notched
P/N: D10178



16"BRUTE Notched
P/N: D10179



16"BRUTE Turbo
P/N: D10172



16"ARIX Traditional
P/N: D10159



16"D-23-VB
P/N: D10182



The ARIX Ring Saw Blades are made specifically for the HYCON Hydraulic Ring Saw. They feature a 3 groove drive channel for outstanding performance and dependability. Advanced multi-layered diamond segments with precise distribution of diamond particles throughout the segments enables these blades to have superior cutting capacity, longer life and a smooth, rapid cutting

- Fits HYCON 16" Ring saw
- Wet only use
- Laser-welded
- BRUTE blades available
- Notched for faster cutting
- Turbo BRUTE Blades
- G-3 ARIX Technology
- Vacuum bonded For ductile pipe



P/N: 140689



HYCON 16" Ring Saw Blades

Diameter & Width	C-50AXB BRUTE Notched	C-50AXB BRUTE Turbo	C-50AX Standard ARIX	Vacuum Brazed
16" x .160"	D10178	D10172	D10159	D10182
16" x .235"	D10179	D10173		
Drive Wheel	140689			

05/07/2024



SawEZ Guide Rail Sawing System for 16" Ring Saw or 16" & 18" Hand Saw



16" Hand Saws



16" Ring Saws



16" Ring Saw

- **SawEZ Rail Mounting system P/N: 152842**
- ***18" HCS18 Mounting bracket P/N: 152945**
- **16" HCS16 Mounting bracket P/N: 152857**
- 16" Ring Saw HRS400 Mounting bracket P/N: 152859**
- *16" Ring Saw HRS400 Mounting bracket P/N: 152860**
- 3' Rail extension kit with wall mounts P/N: 152856**

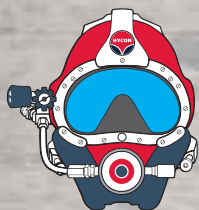
**For Ring Saw Pre 2020 Models
**H00026 HYCON 16" hand saw required
**H00018 HYCON 16" ring saw required
*** H00027 HYCON HCS18 18" Hand Saw*

05/07/2024



SawEZ Guide Rail Sawing System for 16" Ring Saw or 16" & 18" Hand Saw

**Add more
rails for
longer runs
P/N:152856**



Wet/Dry Use

16" or 18" Hand Saws



Optional Accessories shown

The 152842 Wall saw rail system kit includes a winch and Horizontal Slide, qty-2 Rail Extensions (1 meter pieces of rail) for total rail length of 2 meters with the brackets to mount the rail and hand trigger extension. It does not include Saw and/or the mounting bracket (see part numbers below).

HYCON's Rail sawing system improves productivity, safety and finished job quality for just a small fraction of the cost.

- Fits 16" HYCON Ring Saw H00018 sold separately
- Fits 16" HYCON Hand Saw H00026 sold separately
- Includes 6.5 ft of rail Total 3' ea
- Included wall mounting brackets for the rails
- Remote hand trigger for saw control
- Precision control for professional looking results
- Horizontal & Vertical cutting
- Extra rail extension available sold separately
- Upgrade Kits available for older model saws to work ***
- Manual feed and depth control
- Minimize Over cutting with the ring saws 11.75" cutting depth
- Extruded & cast aluminum construction
- Durable and lightweight

05/07/2024



HCS14 14" Saw



The HYCON Cut-off Saw PREMIUM HCS14 and HCS 16 can be used for horizontal and vertical cutting. They cut all types of concrete, steel, brick wall, asphalt etc.

The HYCON Cut-off saw is a very sturdy tool intended for cutting even under the most extreme conditions. It is completely unaffected by water and dust, and all parts run in oil. The HYCON PREMIUM-saws are built for hard use day after day – without breakdowns. The fact, that the saw is always working and does not require service means higher profits than with e.g. a petrol saw. The cut-off saw offers top safety with the built in ASCO System (Automatic Safety Cut off).

The tool automatically cuts off if the blade jams – no injury to the operator.

- 14" Blade capacity
- Oil Flow 5-8 GPM Dry Model
- Oil Flow 5-10 GPM Wet Model
- Working pressure PSI 1800
- Max Pressure PSI 2500
- Max Return PSI 580
- Blade RPM 2400-3600 Dry Model
- Blade RPM 1800-3600 *Underwater use model
- 1" Blade arbor
- Cutting Depth 5-3/8"
- Weight 16 lbs
- Optional saw cart available P/N: 141170
- ASCO System (Automatic Safety Cut off)

Oil Bath parts
for longer life



HCS14 P/N: H00025
HCS16 P/N: H00030W*

*For underwater use W**

05/07/2024





HCS16 16" Saw



- Oil flow 5-10 GPM
- Working pressure 1800 PSI
- Max pressure 2500 PSI
- Max Return pressure 580 PSI
- Blade RPM 1800-3600 Dry Model
- Blade RPM 1400-2900 *Underwater use model
- 1" Blade arbor
- HP @ Blade Shaft 10.3 HP
- Cutting Depth 6-3/8"
- 17 LBS
- Optional saw cart P/N: 141170
- Optional rail sawing system P/N: 152842
- ASCO System (Automatic Safety Cut off)



Rail Saw Mounting
Kit Available

HCS16 P/N: H00026
HCS18 P/N: H00031W*

*For underwater use W** 05/07/2024



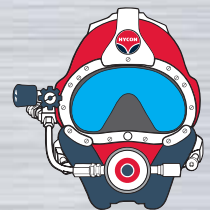
HCS18 18" Saw



- 18" Blade capacity
- Oil Flow 5-10 GPM
- Working pressure 1800 PSI
- Max pressure 2500 PSI
- HP @ Blade Shaft 11.6 HP
- 1" Blade arbor
- Cutting depth 7-3/8"
- 18 LBS
- Will cut any material including rebar
- ASCO System (Automatic Safety Cut off)



DRY/WET

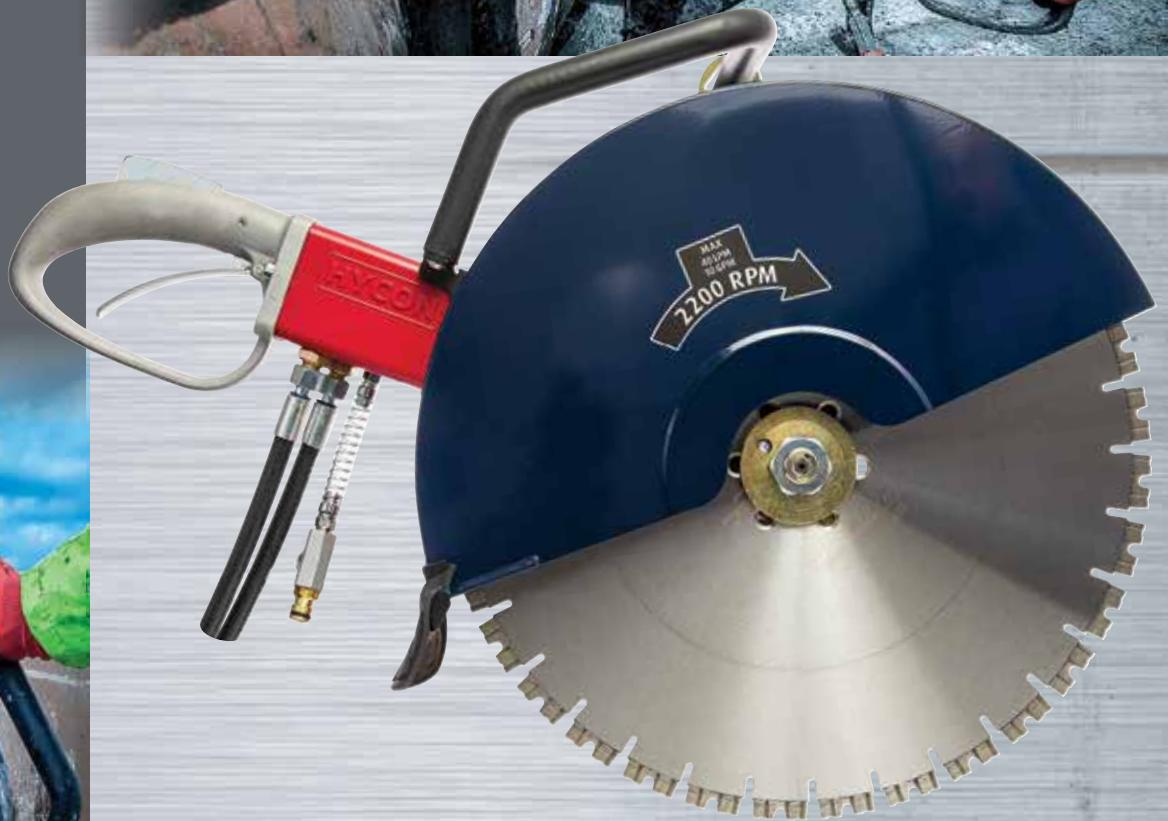


HCS18 P/N:H00027

05/07/2024



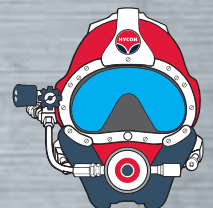
HCS20 20" Saw



The HYCON Cut-off Saw HCS18, and HCS20

All Saws can be used for horizontal and vertical cutting. They cut all types of concrete, steel, brick wall, asphalt etc. The HYCON Cut-off saw is a very sturdy tool intended for cutting even under the most extreme conditions. It is completely unaffected by water and dust, and all parts run in oil. The HYCON Premium-saws are built for hard use day after day – without breakdowns. The fact that the saw is always working and does not require service means higher profits than with e.g. a Gas saw. The cut-off saw offers top safety with the built-in ASCO System (Automatic Safety Cut off). The tool automatically cuts off if the disc jams – no injury to the operator.

- 20" Blade capacity
- Oil Flow 8-12 GPM
- Working pressure 1800 PSI
- Max pressure 2500 PSI
- Max Return pressure 580 PSI
- RPM 1500-2300
- HP @ Blade Shaft 11.6 HP
- 1" Blade arbor
- Cutting depth 8-3/8"
- Weight 20 lbs
- Will cut any material including rebar
- ASCO System (Automatic Safety Cut off)



HCS20 P/N:H00028

05/07/2024

Hydraulic Hand Saw Blades



Cutting concrete with heavy rebar is a tough job. That's why we have the Brute Hydraulic Hand Saw Blades.

They are made with ARIX G3 advanced technology, which means they can cut through the toughest concrete without slowing down. They also have notched segments that make it possible to quickly cut through rebar and get the job done faster than ever before. And because they're double-notched, they will last longer and you'll spend less time changing out your blade while on the job site.

- ARIX G-3 Technology
- 13mm Segment height
- 4-ARIX segment types to choose from
- Our Best selling and fastest cutting blades
- Lowest cost per inch foot of concrete cutting
- Best choice for Hydraulic saws

Arix Hand Saw Blades

1" Arbor with Longyear Flush cut bolt pattern

Diameter & Width	C-50AXB RN Notched Part No.	C-50AXB R Turbo Part No.	C-50AXB R2N Double Notched Part No.	C-42AX Traditional Part No.
14" x .125"	D11201	D11170	D11239	
14" X .235"		D11197		
16" x .125"	D11202	D11171	D11231	D10081
16" x .165"	D11190	D11179	D11232	D10093
16" x .235"	D11191		D11242	
18" x .125"	D11213	D11172	D11244	
20-5/8" x .125"	D11203	D11173	D11233	D10075
20-5/8" x .145"	D11204	D11186	D11234	
20-5/8" x .165"	D11205	D11176	D11246	
20-5/8" x .235"	D11209		D11247	
21" X .125"	D11211		D11219	
21" X .145"	D11214			
24" x .125"	D11206	D11174	D11238	
24" x .145"	D11207	D11187	D11248	D10102
24" x .165"	D11208	D11177	D11249	
24" X .235"	D11210			
30" X .165"	D11194		D11250	

BRUTE

BRUTE Turbo

BRUTE Notched

BRUTE Double Notched

ARIX Traditional



WET ONLY



05/07/2024

SHIBUYA

Wall Saws System

WS0006

Hydraulic wall saw system

S-300H hydraulic wall saw with electric feed system consisting of S-070 hydraulic motor 550 rpm for 30-36" blades with flush pattern, track rail 1200 mm x qty-2 and 600 mm x qty-1, SA0207 feed motor (same track, feed motor and control box as SS-300R), AP-3300 control box, plunge cutting blade guard 30" (for larger blade guard use 152128), and joint plate & screws



Shibuya Wall Sawing System

Track Accessories

Description	Part No.
Track Complete Wall Saw – 47.2"/1200 mm	150406
Track Complete Wall Saw – 23.6"/600 mm	150405
Joint Plate Track – SS300R	150423
Hex Socket Screw – M8x25	150425
Hex Socket Screw – M6x30	150424

Shibuya Wall Sawing System

Saw Accessories

Description	Part No.
Blade Guard 42inch for Shibuya HYD wall saw	152128
Guard 30" SS300R flush-cut	152001
Plunge Blade Guard 30" SS300R	150736
Flange Assy True Flush Cut Pentrunder SS300R	152473

DITEQ
BRUTE

C-51AXBRHN ARIX BRUTE Notched Wall Saw Blades

1-3/8" Flush Cut Arbors

Diameter & Width	Part No.
30" X .187"	D16873
30" X .235"	D16874
36" X .187"	D16877
36" X .235"	D16878
42" X .187"	D16879
42" X .235"	D16880
42" X .187"	D16330
42" X .235"	D16331



05/07/2024



Super Flush Cut Power head

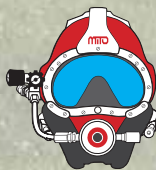
Introducing DITEQ's Super Flush Cut Hydraulic Chainsaw. This concrete hydraulic chainsaw is a prime example of innovative, ergonomic, powerful, rugged, lightweight design.

Designed to make the operator's life easier, The lighter weight makes it easier to work in tight spaces, on ladders, platforms, and underwater. A front "Tiger Grip" provides guide and leverage in the cut, & reducing operator fatigue.

DITEQ's Super Flush Cut uses the same bar and chain that other popular models use. The bar mounting system uses a machined block to increase strength and life.

- 0.1875" Super Flush Cut
- Easy to service and repair
- Robust aluminum cast body
- 10", 15", 20", 25", 30" Bars available
- Lightest 12 GPM hydraulic chain saw on market
- Oil Flow 12 GPM
- Working pressure 2250 PSI
- Max pressure 2500 PSI
- Max Cutting depth up to 30"
- Weight 23 LBS
- .456" Pitch

**Bar & Chain Sold separately*



SF-12 Flush Power head P/N: 141487

05/07/2024



New G-7 Flush Cut Power Head



New G-7 Quick Tension



**Bar & Chain Sold Separately*



- New G-7 Tensioning system
- 1 Step chain tensioning – No Tools
- Easy tensioning the chain with thick diving gloves on
- “Tiger Grip” wall guide during cut
- Easy to service and repair
- Universal bars and chains up to 30”
- Robust aluminum cast body
- 15”, 20”, 25”, 30”, 36” Guide bars available
- Bubble level

- Oil Flow 12 GPM
- Working pressure 2250 PSI
- Max pressure 2500 PSI
- Max Cutting up to 36”
- Weight 23 LBS
- .465” Pitch



WET ONLY



QTH12-Flush Power Head P/N: 141400

05/07/2024



HD-Diamond Chain Bars & Sprockets

Our own DITEQ™ Exclusive Heavy Duty concrete chain for the fastest cutting. Extra heavy duty chain construction for less stretching with anti-stretch O-Rings built into the rivets for less wear and longer life.

- Faster cutting and longer life with less stretching
- Higher diamond concentration
- Less stretching due to anti-stretch O-rings
- Made In the USA
- .456" Pitch fits Force 4 Saws
- Higher diamond concentration
- Wet Use Only



DITEQ BRUTE Heavy Duty Diamond Chain

DITEQ BRUTE Chain Fits Model	Bar	Links	Soft Bond	Life Bond
880/890/695GS/ST12/C120/QTH/630	10"	H50	141742	141743
K6500 Prime/695GS	12"			
880/890/695GS/ST12/C120/QTH/630	15"	H57	141522	141737
K6500 Prime/695GS	16"			
880/890/695GS/ST12/C120/QTH-12	20"	H67	141738	141739
	25"	H79	141740	141741
	30"	H90	141744	141745
	36"	H100	141526	-

DITEQ BRUTE Hydraulic Guide Bars

Description	Model Saws	Part No.
10" Guide Bar	ICS 880 / ICS 890 / STEALTH12 / RGC C120 / DITEQ Mito QTH12/DITEQ SF12	140631
15" Guide Bar		140628
20" Guide Bar		140629
25" Guide Bar		140630
30" Guide Bar		141247
36" Guide Bar		141525

DITEQ BRUTE Gas Guide Bars

Description	Model Saws	Part No.
12" Guide Bar	Prime / Weka / DRS / 695GS	140680
16" Guide Bar		140627
16" Guide Bar		141821*
20" Guide Bar	*STIHL Only	140682
25" Guide Bar		141245



WET ONLY

05/07/2024

Demolition Diamond Chain

DITEQ™ Exclusive Heavy Duty concrete chain for extremely fast cutting in medium to very hard concrete

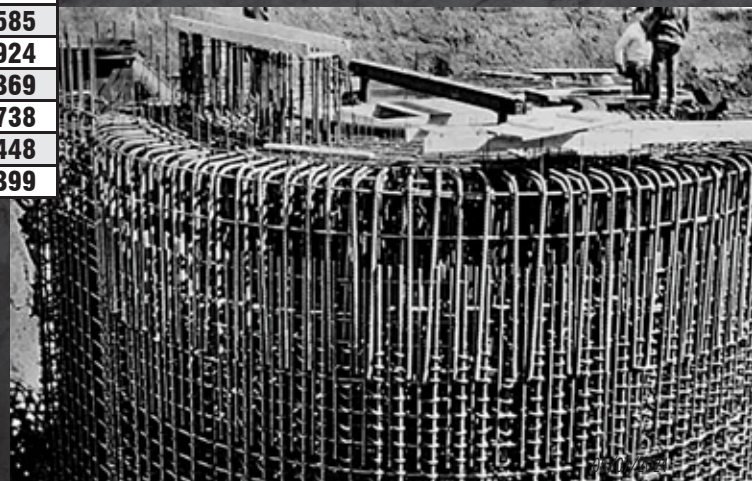
- Faster cutting and longer life
- Heavy duty chain construction
- Heavy steel reinforced concrete
- High diamond concentration
- Twice the life and cutting speed of traditional Ductile chains
- .456 Pitch
- Diamond on every segment
- Less stretching due to anti-stretch O-rings
- Double vacuum brazed segments on every link
- Wet Use Only

DITEQ Double Vacuum Braided Diamond Chain

Chain Fits Model Saws	Bar	Links	Vacuum Braised
880/890/695GS/ST12/C120/QTH/630	15"	U58	141813
K6500 Prime/695GS	16"		
880/890/695GS/ST12/C120/QTH-12	20"	U68	141826
880/890/695GS/ST12/C120/QTH-12	25"	U80	141827

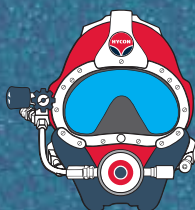
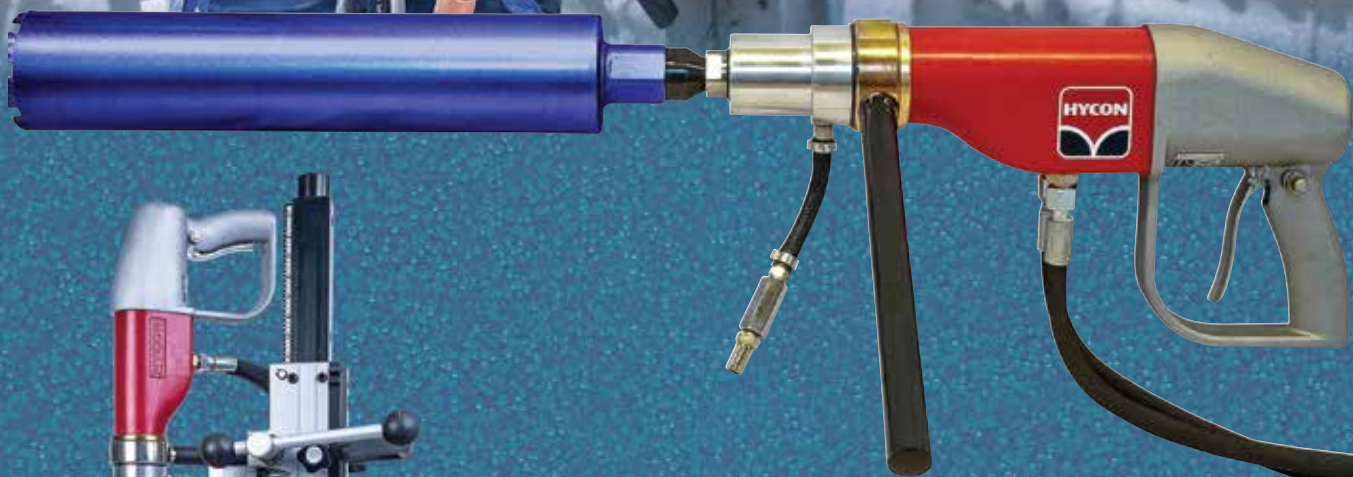
DITEQ Sprocket Accessories

Diameter	Hydraulic Saw Models	Part No.
Sprocket	ICS 880/	140585
	ICS 890/Stealth12	140924
	Stanley DS12	141369
	RGC C-150	140738
Sprocket Flush	ICS 890/Stealth12/DITEQ Super Flush SF12	141448
	DITEQ Mito QTH12	141399





HYCON Core Drills



- GPM 5 @ Max 2500 PSI
- Working pressure 1450 PSI
- 0-1500 RPM Variable speed HCD25-100
- 0-600 RPM Variable speed HCD50-200
- Heavy-Duty hydraulic motors
- 1-1/4"-7 Thread size adapter Included
- 5/8"-11 Thread adapter sold separately
- Ergonomic design for operator comfort
- Swiveling front handle
- Works underwater
- *14" Max bit capacity with 1.25" spacer included
- Fixed Base size 6.22" x 8.54"
- Drilling stroke 26"
- Roller carriage with Right or left carriage feed handle
- 2" Square Heavy-Duty Reinforced Hybrid column



HCD25-100 Drill 1"-4" diameter bits P/N: DR2026

HCD50-200 Drill *2"-8" diameter bits P/N: DR2027

TS-255 Fixed Base Assembly P/N: 150411

TS-255 HD Column 39.4" P/N: 152100

TS-255 Carriage P/N: 152789

Carriage Feed Handle P/N: 150046

TS-255 Spacer 1.25" P/N: 150514

HD Squeeze Clamp P/N: 152904

05/07/2024

Shibuya HYD Drills

These compact motors deliver reliable power to perform over a broad range of professional applications. These units are part of an integrated system with the industry's most extensive line of accessories. All Shibuya hydraulic motors are complete with a spindle unit and flow control valve manifold. Spindle thread is A-rod and every hydraulic motor comes with 2 A-rod Adapter female to 1-1/4"-7 male thread.

- 43" Column
- 24" Drilling Stroke
- 2-7/8" Column Size
- Powerful compact motor
- Highly efficient power unit
- Relief valve for added protection
- Fine incremental control of power
- 1-1/4"-7 Thread adapter included
- HD Danfoss Motors
- Working pressure 2000 - 2500 PSI
- Max 2500 PSI

TS-680H

- 32" Max Bit Capacity*
- 26" Max Bit Capacity*
- 100 RPM @10 GPM

TS-660H

- 32" Max Bit Capacity*
- 26" Max Bit Capacity*
- 100 RPM @10 GPM

TS-440H

- 16" Max Bit Capacity*
- 250 RPM @ 10 GPM



TS-660H 24" Max Bit Capacity* P/N: DR1028
 TS-680H 32" Max Bit Capacity* P/N: DR1029
 TS-440H 16" Max Bit Capacity* P/N: DR1027

**As configured out of the box*

**With included Spacers*

05/07/2024

C-41AX ARIX Short 9" Wet/Dry

When the job requires only dry drilling, you need the ARIX™ G3 advantage to provide faster cutting and longer life. Aggressive segment design grips the surface to prevent slippage for faster hole starting.

ARIX™ technology gives you maximum productivity with the lowest possible cost per job. Diamonds are individually placed in strategic positions to maximize cutting performance.

Works equally well in reinforced concrete, cinder block, concrete block, and brick. Turbo style segments to offer superior drilling speed



- 9" Drilling depth
- 2" - 6" Wet/Dry use
- 7" - 9" Wet Use Only
- 1-1/4"-7 Thread
- 1"-6" are Laser welded
- 12 mm Segment height
- Concrete with rebar
- Steel plate and pan deck with concrete
- Fast speed and long life



C-41AX PRO Short 9" Wet/Dry 9" Usable Drilling Depth	
Diameter	Part No.
1"	D30501
1-1/4"	D30503
1-1/2"	D30505
1-3/4"	D30507
2"	D30508
2-1/4"	D30509
2-1/2"	D30510
3"	D30511
3-1/2"	D30512
4"	D30513
4-1/2"	D30514
5"	D30515
6"	D30516
7" Wet Only	D30517
8" Wet Only	D30518
9" Wet Only	D30519

05/07/2024

C-42AX ARIX 14" Depth Wet/Dry



When the job requires only dry drilling, you need the ARIX™ G3 advantage to provide faster cutting and longer life. Aggressive segment design grips the surface to prevent slippage for faster hole starting.

ARIX™ technology gives you maximum productivity with the lowest possible cost per job. Diamonds are individually placed in strategic positions to maximize cutting performance. Works equally well in cinder block, concrete block, and brick. Turbo style segments to offer superior drilling speed.

- 14" Drilling depth
- G3 ARIX technology
- 2" - 6" Wet/Dry use
- 7" - 14" Wet Use Only
- 1-1/4"-7 Thread
- 2"-6" are Laser welded
- 12 mm Segment height
- Concrete with rebar
- Steel plate
- Pan deck with concrete
- Fast speed and long life

C-42AX ARIX PRO Wet/Dry

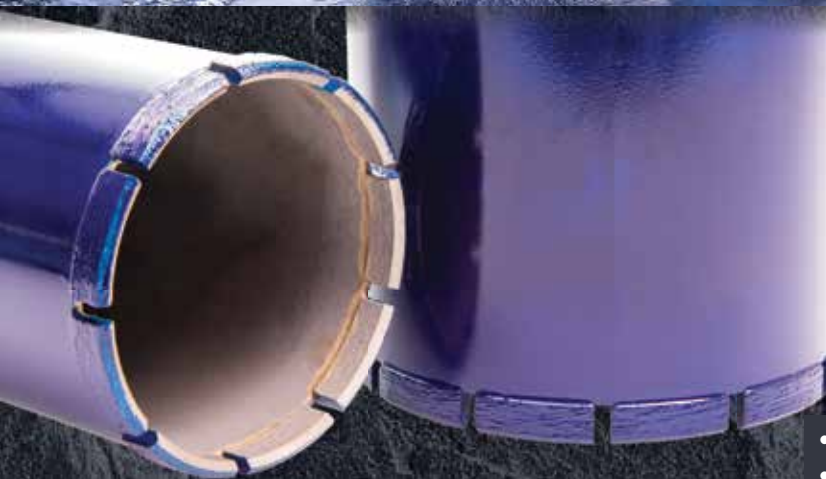
12 mm Segments

Diameter	Part No.
2"	D31533
2-1/4"	D31544
2-1/2"	D31545
3"	D31546
3-1/2"	D31547
4"	D31548
4-1/4"	D31553
4-1/2"	D31549
5"	D31550
6"	D31552
7" Wet Only	D31554
8" Wet Only	D31555



05/07/2024

C-43 Asphalt & Prestressed 14" Drilling Wet Only



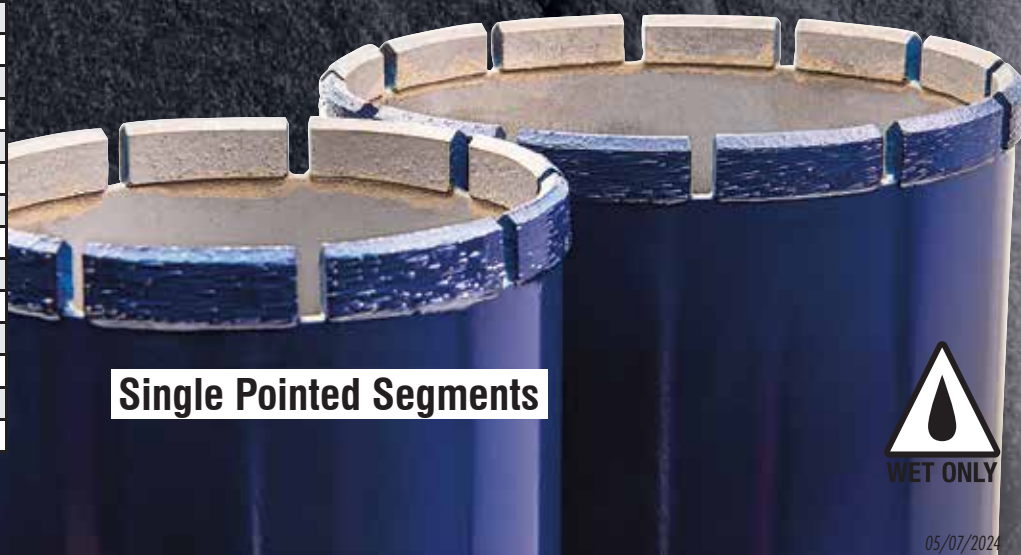
Same high quality segments as used on the C32 and C52 bits but with more segments per bit spaced closer together for longer life in asphalt and abrasive materials and less chance of hang-up on prestressed cable, loose rebar, and wire mesh, where these conditions create a problem for bits with wider spaces between segments.

C-43 Asphalt & Prestressed 1-1/4"-7 thread .315" Segments

Diameter	Part No.
2"	D32124
2-1/4"	D32125
2-1/2"	D32126
3"	D32128
3-1/2"	D32130
4"	D32131
4-1/4"	D32132
4-1/2"	D32133
5"	D32135
5-1/2"	D32136
6"	D32138
6-1/4"	D32139
6-1/2"	D32140
7"	D32141
8"	D32142
10"	D32144



- 1-1/4"-7 thread
- Wet Use Only
- Silver soldered segments
- 8mm Segment height
- Single Pointed C-32 Segments
- Excellent for drilling concrete with pretensioned cable or Concrete with wire mesh
- Increased number of segments for long life when drilling
- Asphalt and abrasive materials
- More segments for longer life in asphalt
- Single pointed for faster starting of hole
- For drilling in high strength and heavily reinforced concrete



Single Pointed Segments



05/07/2024

C-50AX BRUTE 14" Drilling Wet Only

New G3 ARIX Technology allows for even faster-cutting speed and improved bit life over traditional diamond segments. Professional grade wet drilling bit for hard aggregate and heavy steel rebar reinforcements. Single pointed segment starts faster and with less chatter. Tall 12 mm segments give longer life and lowers your cost per hole.

C-50AXP ARIX PRO BRUTE 1-1/4"-7 thread .472" segments	
Diameter	Part No.
2"	D34301
2-1/4"	D34302
2-1/2"	D34303
2-3/4"	D34304
3"	D34305
3-1/2"	D34306
4"	D34307
4-1/4"	D34308
4-1/2"	D34309
5"	D34310
5-1/2"	D34311
6"	D34312
6-1/4"	D34313
6-1/2"	D34314
7"	D34315
8"	D34316
9"	D34317
10"	D34318
12"	D34319
14"	D34320

- 14" Drilling depth
- G3 ARIX technology
- Wet only use
- 1-1/4"-7 Thread
- 2"-6" are Laser welded
- 12 mm Segment height
- Reinforced cured concrete with rebar
- Steel plate and pan deck with concrete
- Fast speed and long life



C-51 & C-52 14" Drilling Wet Only



Faster drilling – The double-pointed segments provide incredibly fast drilling speeds. **Fast seating and reduced vibration** – The double-pointed tips penetrate quickly, and hold a straight drilling path to reduce side drag.

Reduced vibration improves drilling efficiency and bit life. Improved cooling and slurry removal. The double-pointed segments increases water flow to reduce heat and remove slurry more efficiently.

Specially formulated segments – Pro V bits contain high concentrations of quality diamonds combined with a special blend of metal powders to deliver maximum performance with lowest drilling costs.

- 3/8" - 1-3/4" are crowns
- 3/8" - 1-1/2" are 5/8-11 thread
- 1-5/8" and larger are 1-1/4-7 thread
- 1" - 6" are laser-welded
- 16" and larger are spoke back
- C-52 More Segments = More Holes
- C-51 Fewer Segments = Faster Drilling
- Wet Only Use
- Concrete with Steel or Rebar



**C-52 Double
Pointed Segments**



WET ONLY

PRO Wet Core Bits

10.7 mm segments

3/8" - 1-1/2" are 8/5"-11 Thread

3/8" - 1-3/4" are Crowns

Diameter	C-51	C-52
3/8"	D36225	
1/2"	D36226	
5/8"	D36227	
3/4"	D36228	
7/8"	D36229	
1"	D36230	D32321
1-1/8"	D36231	D32322
1-1/4"	D36232	D32323
1-3/8"	D36233	D32324
1-1/2"	D36234	D32325
1-5/8"	D36235	D32326
1-3/4"	D36236	D32327
1-7/8"		D32328
2"	D36101	D32201
2-1/4"	D36102	D32202
2 1/2"	D36103	D32203
2-3/4"	D36104	D32204
3"	D36105	D32205
3-1/4"	D36106	D32285
3 1/2"	D36107	D32207
4"	D36108	D32208
4-1/4"	D36109	D32209
4 1/2"	D36110	D32210
5"	D36112	D32212
5 1/2"	D36113	D32213
6"	D36115	D32215
6-1/4"	D36116	D32216
6 1/2"	D36117	D32217
7"	D36118	D32218
8"	D36119	D32219
8-1/2"	D36210	D32292
9"	D36120	D32220
10"	D36121	D32221
11"	D36176	D32230



Diameter	C-51	C-52
12"	D36122	D32222
13"	D36132	D32240
14"	D36123	D32223
16"	D36124	D32232
18"	D36125	D32233
20"	D36126	D32234
24"	D36136	D32235
26"	D36163	D32231
30"	D36129	D32238
36"	D36351	D33417

Core Drilling Accessories

Core Bit Extensions

1-1/4-7 Thread
6" P/N: 150161
12" P/N: 150043
24" P/N: 150890
36" P/N: 151664



5/8-11 Thread
6" P/N: 150547
12" P/N: 150509



Slider P/N: 151769
Copper Washer P/N: 150635
Nylon Washer P/N: 150654



PUMP CANS
3 gal SHIBUYA
P/N: 151769



3.5 gal CHAPIN
* P/N: 151055

**Hose not included*



1/2" Smart Drop in Anchors P/N: 151700
1/2" Smart Setting tool P/N: 151705



Core lasso P/N: 150351



Wedge Bolts P/N: 151899



PRO Fastnut 1/2" - 13 P/N:
150327



1/2" Heavy Square Washer P/N: 150615

05/07/2024



Hand Held Breakers Wet/Dry



HH10RV Breakers

Handheld Hydraulic Hammer HH10RV

Is an exceptionally lightweight pick hammer designed for horizontal breaking in walls, brick wall and reinforced concrete. The low weight and compact design makes it very suitable for narrow working places.

The HH10RV is a very popular hammer among contractors, telecom, supply Companies (power-water-gas-sewage), and is a true "hit" for rental.

HH10RV is the strongest 20 Lb breaking hammer on the market, and no Pneumatic or electric breaker has anything like the same performance. The standard tool size is hex .580. The hammer can be supplied from any HYCON HPP power pack with a 5 GPM output

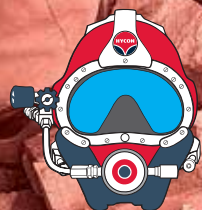
- 20 Lb Weight Class
- Chipping Hammer Tools
- Quick disconnect couplers included
- *Works Underwater P/N:H20014W
- Detachable Front Handle
- Popular choice for demolition
- 5 GPM
- Impacts 2100 BPM
- Collar .580 Hex Round
- Blow energy 22 Joules
- Weight 22 LBS
- Max pressure 2300 PSI
- Working pressure 1450 PSI



HH10RV P/N: H20014
Underwater HH10RV P/N: H20014W



05/07/2024





Bits .580" Hex RND Collars

Breaker Bits

Points and Flat Chisels

are the main tools used for concrete work and constitute the bulk of the total usage of Chipping Hammer tools. Scaling Chisels are used for variety of purposes such as chipping off rust or scale from metal surfaces, general cleanup work on concrete, cleaning up castings, and wherever a wide blade can be used for removal of unwanted or excess materials. Scaling Chisels come in blade widths of 1-1/2", 2", 2-1/2", and 3"

Chipping Hammer

Tools are for use in light weight pneumatically operated hammers and are all designed with a retainer collar to promote safety. The shanks conform to the U.S. Navy specifications for round or hex-round shanks. These tools are available with either a round or oval collar.

Bushing Tools

Are used to level or roughen uneven floors or walls prior to refinishing

.580" Bits for HH10RV Breakers

HEX Round Collars

Size	Working End	Length	Part No.
1"	Narrow Chisel	9"	152076
3/4"	Narrow Chisel	12"	152314
1"	Narrow Chisel	18"	152077
1"	Narrow Chisel	24"	152114
1"	Narrow Chisel	36"	152315
1"	Narrow Chisel	48"	152316
1"	Narrow Chisel	60"	152317
1-1/2"	Scaling Chisel	9"	153226
1-1/2"	Scaling Chisel	12"	152324
1-1/2"	Scaling Chisel	18"	153227
2-1/2"	Scaling Chisel	12"	153243
2-1/2"	Scaling Chisel	18"	152320
2-1/2"	Scaling Chisel	9"	152319
2"	Scaling Chisel	9"	152078
2"	Scaling Chisel	12"	152318
2"	Scaling Chisel	18"	152079
3"	Scaling Chisel	9"	152321
Carbide	Bushing Tool	10"	152646
Steel	Bushing Tool	10"	152645
	Moil Point	9"	152072
	Moil Point	12"	152322
	Moil Point	18"	152975
	Moil Point	24"	152323
	Moil Point	36"	153228
	Moil Point	48"	153229
	Moil Point	60"	153241
5/8"	Ground Rod Driver	11-1/4"	152648
3/4"	Ground Rod Driver	11.25"	152649
4-1/2"	Clay Spade		152647

Narrow Chisel

2" Chisel

Bushing Tool

Moil Point

Ground Rod

Clay Spade





30 lb Breakers Wet/Dry

HH15
7/8" Hex"
x 3-1/4"

HH15 has enough power to even do hard jobs like breaking hard concrete and even asphalt jobs. They have been using it for this for very long time and find it is ideal with the low weight. Fitted with our anti vibration handle the operators do not get as tired as with heavier breakers. Higher performance-to-weight ratio than other pneumatic or electric breakers. Continuous component lubrication reduces wear, minimizes maintenance and extends product life.

- 37 LBS
- Oil Flow 5 GPM
- Working PSI 1450
- Max Pressure 2300 PSI
- Max Back pressure 220 PSI
- Blow Frequency 1,830 BPM
- Noise level 1 m LPAdB 93
- Noise level LWAdB 105
- Vibration-dampening system
- Vibration level (3 axis) m/s² 6.6
- Vibration level (3 axis) m/s² 6.6
- Tool size 7/8" HEX x 3-1/4" (Green)
- 1 Year Warranty
- Parts and service available in USA
- For underwater use W*



HH15 P/N: H20002

HH15 P/N: H20002W*

*For underwater use W**

05/07/2024



40 lb and 50 lb Breakers Wet/Dry

HH20RV & HH23

HYCON HH20RV 40 lb Class

Is a compact all-around breaker. Despite low weight, it handles even the toughest jobs. It is designed for breaking concrete, asphalt, frozen ground, etc. It comes standard with a vibration-reduced handle, which brings high operator comfort. The HH20 is the preferred choice of contractors, municipalities, utilities, etc. and is perfect for rental

HYCON HH23 50 lb Class

is a compact and sturdy breaker with 40% higher performance than HH20. It is designed for tough jobs in hard concrete, asphalt, ramming, etc. Comes standard with the HYCON vibration-reduced handle. It is available both as 5-8 GPM models. The HH23 is especially used by contractors, municipalities etc. and is very suitable for the rental business.

- HH20 Oil Flow 5 GPM
- HH23 Oil Flow 5-8 GPM
- HH20 Working pressure 1600 PSI
- HH23 Working pressure 1750 PSI
- HH20/HH23 Max pressure 2300 PSI
- HH20 Impacts 1560 BPM
- HH23 Impacts 1380 BPM
- HH20 Blow energy 44 Joules
- HH23 Blow energy 85 / 95 Joules
- HH20 Weight 48 LBS
- HH23 Weight 52 LBS
- For underwater use W*



HH20 1" Hex P/N: H20010

HH20 1" Hex P/N: H20010W*

HH20 1-1/8" Hex P/N: H20011

HH20 1-1/8" Hex P/N: H20011W*

HH20 1-1/4" Hex P/N: H20003

HH20 1-1/4" Hex P/N: H20003W*

HH23 1" Hex P/N: H20004

HH23 1" Hex P/N: H20004W*

HH23 1-1/8" Hex P/N: H20005

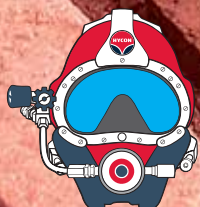
HH23 1-1/8" Hex P/N: H20005W*

HH23 1-1/4" Hex P/N: H20006

HH23 1-1/4" Hex P/N: H20006W*

*For underwater use W**

05/07/2024





70 lb and 90 lb Breakers

HH27 70 lb
HH35 90 lb



HYCON HH27 70 lb Class

is exceptionally strong coping with all jobs requiring extreme power (75% higher performance than HH20). Best power to weight ratio. It is designed for breaking hard concrete, asphalt, ramming jobs etc. Comes standard with the HYCON vibration-reduced handle. It is especially used by contractors, armies, rail roads, etc.

HYCON HH35 90 lb Class

The breaker has an extra accumulator, which adds even more power, and it hits more than twice as hard as the HH20 and outperform any other 90lb breaker in the market – no matter if pneumatic or hydraulic. It is designed for breaking hard concrete, asphalt, ramming jobs etc. Comes standard with the HYCON vibration-reduced handle.

- HH27 Oil Flow 8 GPM
- HH35 Oil Flow 8-10 GPM
- HH27/HH35 Working 1850 PSI
- HH27/HH35 Max 2320 PSI
- HH27 Impacts 1260 BPM
- HH35 Impacts 1100-1440 BPM
- HH27 Blow energy 105 Joules
- HH35 Blow energy 130 Joules
- HH27 Weight 61 LBS
- HH35 Weight 74 LBS
- For underwater use W*

HH27 1-1/4" Hex P/N: H20007
HH27 1-1/4" Hex P/N: H20007W*
HH27 1-1/8" Hex P/N: H20007
HH27 1-1/8" Hex P/N: H20007W*
HH35 1-1/4" Hex P/N: H20012
HH35 1-1/4" Hex P/N: H20012W*

*For underwater use *W*

05/07/2024



Dust Control Breaker Wet Kit

Silica is a natural substance found in most rocks, sand and clay and in products such as bricks and concrete. Some of this dust may be fine enough to breathe deeply into the lungs and cause health problems.

The HYCON silica dust suppression kits are made to be attached to all HYCON handheld breakers. The water sprayed by the HYCON silica dust suppression kit minimizes worker's exposure to harmful silica dust before it becomes airborne.

The HYCON retrofit silica dust suppression kit comes in three variants: one for the HH10 breaker, one for HH15 - HH27 and another one for the HH35 breaker.

- Effective suppression of dust with a minimum amount of water
- Flow 0,5 - 1,0 LPM at 1,5 - 4 BAR pressure.
- Connect to portable water supply or tap water
- Water Spray cone 58 degree for optimum suppression on dust created from breaking work
- Easy access on/off valve next to operators hand
- Fits all new and existing HYCON breakers
- Comply with OSHA Crystalline Silica September 2017 work practice method for out- and indoor works up to 4 hours without need for respiratory equipment
- Easy access on/off valve next to operators hand
- The HYCON water container must be ordered separately.



20 lb Breakers P/N: 152255
30-70 lb Breakers P/N: 152256
90 lb Breakers P/N: 152257

05/07/2024



Rock Drills 7/8"x4-1/4"

HRD-28 HRD-30 With Compressor



The HYCON HRD30 is a "all-in-one" high performing handheld hydraulic drill designed for the toughest drilling applications in granite and concrete up to 2,4 meters of drilling depths.

Using standard integral drill steel with air-flushing from the integrated compressor combined with a high performing hydraulic impact and rotation unit makes the HRD30 the most effective handheld hydraulic drill available on the market. The airflow of the integrated compressor is sufficient for most standard drilling in granite or concrete.

Compact in size the HRD30 performs in line (or better) with larger pneumatic type drills where costly and large compressors will make it difficult to get and transport to job sites.

The HRD30 hydraulic drill is ideal for anchoring holes as well as blast- or splitting holes measuring between 25-50 mm depending on drilling depth. It delivers more precise hole sizes too, which is useful when working with non-dynamite destruction solutions such as expanding smoke cartridges or an expanding cracking agent (Bentonamit).

- Max PSI 2,500
- Working Pressure 2,175 PSI
- Oil Flow 8-GPM
- Rotation counter clockwise 320 RPM
- Blow frequency Hz 40
- Noise level LWA dB 105
- Air flushing, m3/h 10
- Vibration level (3 axis) m/s2 13
- Weight 64 Lbs
- Integrated air flushing compressor
- Up to 2,4 m drilling depth
- Build-in oil motor for drill rotation
- Mobile and suitable for hard to reach places
- Vibration reduced handles



7/8" x 4-1/4" (BLUE) Whirlibits *Fits HYCON HRD28 & HRD30*

Diameter	Length	Part No.
7/8"	9"	152275
7/8"	27"	152276
1"	9"	152393
1"	15"	152394
1"	21"	152395
1-1/8"	15"	152374
1-1/8"	21"	152375
1-1/8"	27"	152376
1-1/4"	27"	152990
1-3/8"	15"	152531
1-3/8"	21"	152464
1-3/8"	27"	152277
1-1/2"	21"	152989

W-7/8" Whirlibit P/N: 152394

External Air HRD28X CCW P/N: H20023
Built In Air HRD30 CCW P/N: H20024

05/07/2024

Narrow Chisel

3" Chisel

Moil Point

Asphalt Cutter

Clay Spade

Ground Rod Driver

Detachable Shank

7" Dirt Tamper P/N: 152973

Standard Narrow Chisel

Used for the identical purpose as the Moil Point, but with a blade rather than a point, the Standard Narrow Chisel is preferred

Standard 3" Chisel

One of the most versatile of all tools. Its many uses include cutting asphalt, line cutting or scoring of concrete, and breaking of softer concretes and other substances too soft for efficient moil point work.

Standard Moil Point

The most popular all-purpose tool. Contractors, Public Utilities, Municipalities and other users depend upon this for their everyday concrete breaking needs.

HI-DUTY

Available in Moil Point, Narrow Chisel, and 3" Chisel, the HI-Duty tools are made from a beefier round steel and are recommended where a heavier paving breaker hammer is used or resistance to fatigue or prolonged life is desired.

7/8" x 3-1/4" (Green) Bits

Fits Hycon HH15 & Stanley BR45110

Diameter	Working End	Length	Part No.
1"	Narrow Chisel	14"	152992
1"	Narrow Chisel	18"	152102
1"	Narrow Chisel	24"	152325
1"	Narrow Chisel	36"	152982
1"	Narrow Chisel	48"	153242
3"	3" Chisel	14"	153075
3"	3" Chisel	18"	152103
3"	3" Chisel	24"	153076
3"	3" Chisel	36"	153077
	Moil Point	14"	181888
	Moil Point	18"	153073
	Moil Point	24"	152980
	Moil Point	30"	152981
	Moil Point	36"	153074
	Moil Point	48"	152983
	Digging Chisel	17.25"	153044
	Asphalt Cutter	11"	152338
	Clay Spade	4.5"	152995
	Detachable Shank		152985

1-1/8" x 6" (Blue) Bits

Fits HYCON HH20 & Stanley 40 lb - 90 lb

Diameter	Working End	Length	Part No.
1"	Narrow Chisel	14"	152984
1"	Narrow Chisel	18"	153082
1"	Narrow Chisel	24"	152331
1"	Narrow Chisel	36"	153083
1"	Narrow Chisel	48"	153232
1"	Narrow Chisel	60"	152332
3"	3" Chisel	14"	152333
3"	3" Chisel	18"	153221
3"	3" Chisel	24"	151909
3"	3" Chisel	36"	153223
	Moil Point	14"	151890
	Moil Point	18"	152329
	Moil Point	24"	152330
	Moil Point	36"	153230
	Moil Point	48"	153231
	Asphalt Cutter	11"	152340
	Asphalt Wedge	12"	153248
	Clay Spade	5.5"	152997
	Detachable Shank	9"	152971
3/4"	Ground Rod Driver		152979
5/8"	Ground Rod Driver		152978
2-1/5"	Pin Driver		153266
	Brick Removing	11.5"	153240
	Frost Wedge	17.5"	153045
	Keen Kut	16"	152800
	Tarmac Cutter	10.5"	152996

1-1/4" x 6" (Red) Bits

Fits Hycon HH15 & Stanley BR45110

Diameter	Working End	Length	Part No.
1"	Narrow Chisel	14"	152113
1"	Narrow Chisel	18"	153084
1"	Narrow Chisel	24"	152336
1"	Narrow Chisel	36"	153085
1"	Narrow Chisel	48"	153238
1"	Narrow Chisel	60"	152337
3"	3" Chisel	14"	151887
3"	3" Chisel	18"	153222
3"	3" Chisel	24"	152043
3"	3" Chisel	36"	153224
3"	3" Chisel	48"	151910
	Moil Point	14"	151891
	Moil Point	18"	152334
	Moil Point	24"	152335
	Moil Point	36"	153236
	Moil Point	48"	153237
	Asphalt Cutter	11"	152125
	Concrete Buster	14.5"	151914
3/4"	Ground Rod Driver		152977
5/8"	Ground Rod Driver		152976
	Asphalt Wedge	12"	153043
	Clay Spade	5.5"	152465
	Detachable Shank	9"	152972
	Frost Wedge	17.5"	153239
	Keen Kut	16"	152994
	Tarmac Cutter	10.5"	152998

1" x 4-1/4" (White) Bits

Fits Hycon HH20 & HH23 Stanley 40 lb Breakers

Diameter	Working End	Length	Part No.
1"	Narrow Chisel	14"	152327
1"	Narrow Chisel	18"	152890
1"	Narrow Chisel	24"	152328
1"	Narrow Chisel	36"	152993
3"	3" Chisel	14"	152926
3"	3" Chisel HI-Duty	14"	152927
3"	3" Chisel	18"	152891
3"	3" Chisel	24"	151911
3"	3" Chisel	36"	153233
	Moil Point	14"	151889
	Moil Point	18"	153225
	Moil Point	24"	152326
	Moil Point	36"	153234
	Moil Point	48"	153235
2"	Pin Driver		153265
	Asphalt Cutter	11"	152339
	Clay Spade	5.5"	153269
	Detachable Shank	9"	152986
	Digging Chisel	17.25"	153247

Narrow Chisel

3" Chisel

Moil Point

Asphalt Cutter

Clay Spade

Ground Rod Driver

Detachable Shank



Pin Driver
P/N: 153265

05/07/2024



Hydraulic Post Drivers

HPD60 Post Driver

The HYCON post driver is easy to use. Place it on the post and activate the trigger, or if you cannot reach high up place it on the post and activate it by the remote valve. With high power, it gets the job done fast day after day. In all weathers.

Because it is hydraulic, there is no maintenance. Connect the driver to our power packs or to excavators, tractors etc. Areas of use: fencing, road signs, forestry, vineyards, setting up crash barriers, all kinds of steel profiles, anchoring, tent stakes etc.

Another beneficial advantage is to use the oil flow divider. The oil flow divider can be connected to various power sources, like excavators, trucks, loaders, tractors etc.

- Can be used in all kinds of weather
- Can be used under water
- Requires no maintenance
- Post adapter sold separately
- Sign posts, forestry, vineyards
- Optional remote control valve kit P/N: 152632
- 6-8 GPM @ Working Pressure 1750 PSI
- Max PSI 2300
- 64 lb

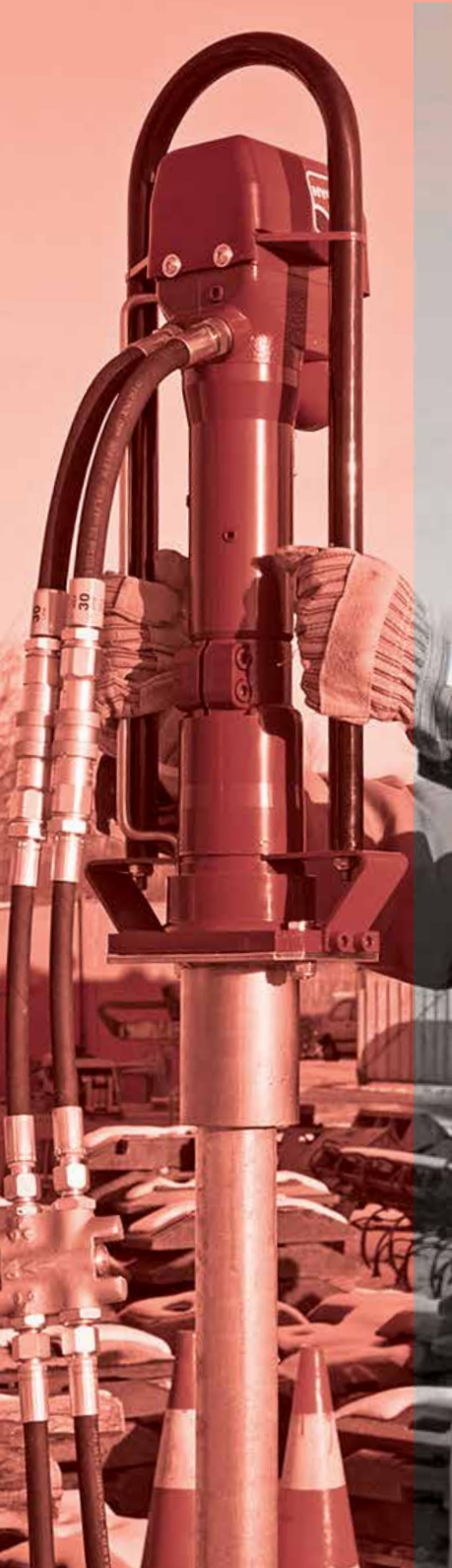
Post Adapters

HPD60 P/N: H20008

05/07/2024



Hydraulic Post Driver Adapters

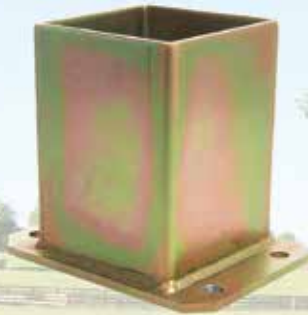


Remote Valve Kit



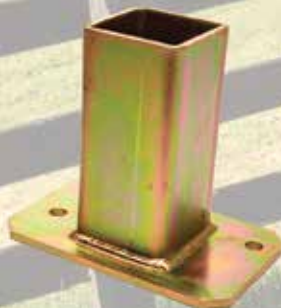
P/N: 152632

4-1/8" Square



P/N: 152687

2-1/2" Square



P/N: 151871

Round



5" P/N: 152689



3" P/N: 151872

4" P/N: 152688

2-3/8"



P/N: 152529

05/07/2024



2"-3" Trash Pumps 2" 210 GPM 3" 370 GPM



**3" Dewatering
Pump No Hose**

HWP3 3" P/N: 110193LH Dewatering No Hose
HWP3 3" P/N: 110193 Dewatering With Hose



3" Pump No Hose



HWP2 2" P/N: 110134LH No Hose
HWP2 2" P/N: 110134 With Hose

***2" x 50' Extension P/N: 110199**
***3" x 30' Extension P/N: 110133**
****3" x 30' Hose Only P/N: 110133LC**
***3" x 50' Extension P/N: 110198**
****3" x 200' Hose Only P/N: 110197**



2" Pump No Hose

05/07/2024



4" Trash Pumps 750 GPM



HYCON Submersible pumps

High quality and performance. Run dry without damage!

The HYCON submersible pump is a VORTEX pump. VORTEX pumps are designed especially for dirty water with even very large solids. The impeller at top sets the water in a circular movement and by centrifugal force a center of air shaped like a cone will occur. This way there is very little contact between the water and the impeller, and wear is greatly reduced compared to other types of pumps. In other types of pumps, the water is pumped directly by the impeller, which is therefore worn much faster. Pumps of the special VORTEX design have a longer lifetime and can pump larger solids.



HWP4 4" P/N: 110136LH No Hose



HWP4 4" P/N: 110136 With Hose

- 2" Pump 210 GPM/ Max Head 98'
- 3" Pump 370 GPM/ Max Head 65'
- 4" Pump 750 GPM/ Max Head 65'
- 2"-3" Oil Flow 5-8 GPM
- 4" Oil Flow 8-10 GPM
- Max pressure 2500 PSI
- Run dry without damage
- Very high performance
- Few wearing parts – less service
- Longer service life
- Will pump thick flowing liquids
- Parts & Service available in the USA
- BSP British Standard Pipe Thread (Non-Tapered)
- Weight 2" 17 Lbs / 3" 24.25 Lbs / 4" 59 Lbs

***4" x 30' Extension P/N: 110137**

****4" x 30' Discharge hose**

P/N: 110137LC

05/07/2024

**Includes Both Male and Female Couplers*

***Hose Only no Couplers*



Sanitary Bypass Pumping



P/N: 110207 & 110208

- Pump riser to improve flow
- High volume pumping
- Connect two pumps together for longer and higher runs
- Plug flange to bypass lines in use
- Run dry without damage
- No electricity needed
- Empty flooded manholes
- Used by water and sewer departments

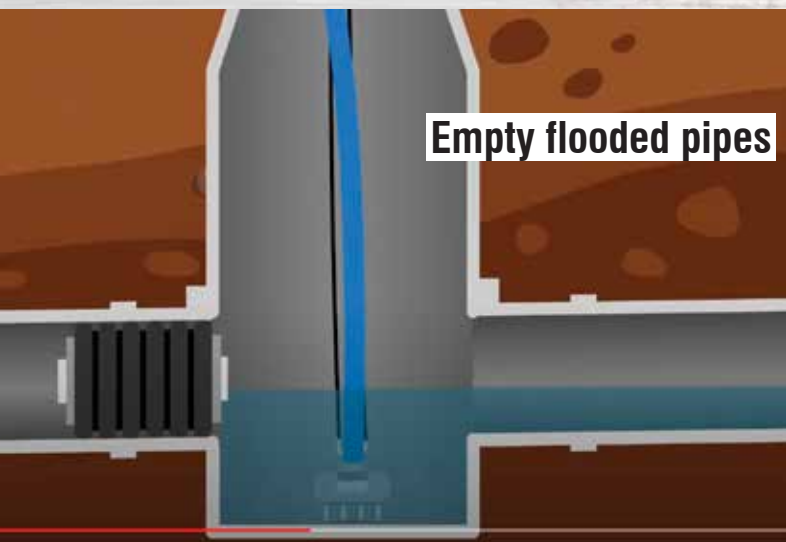


**2" P/N: 110210
3" P/N: 110211**

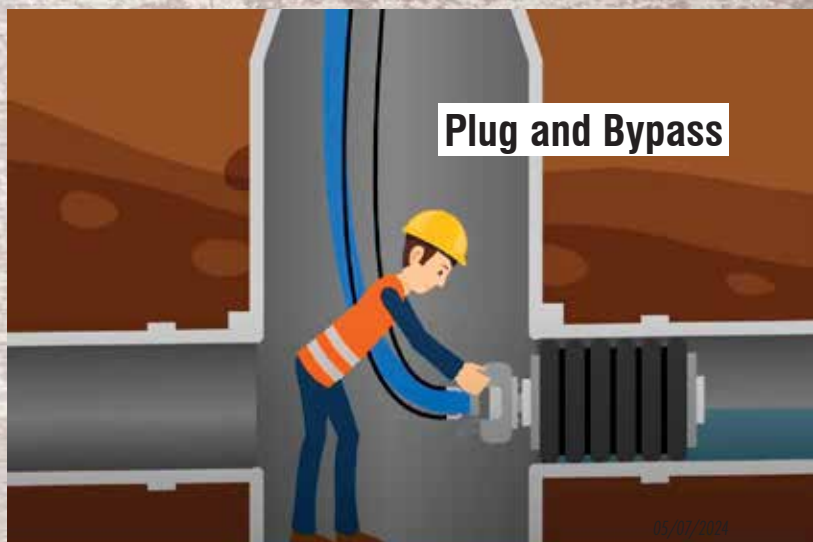


**P/N: 110211 Flange
P/N: 110132 3" Pump**

**Riser Foot for HWP2 P/N: 110207
Riser Foot for HWP3 P/N: 110208
Riser Foot for HWP4 P/N: 110209
Inlet Flange For HWP2 P/N: 110210
Inlet Flange For HWP3 P/N: 110211
Inlet Flange For HWP4 P/N: 110212**



Empty flooded pipes



Plug and Bypass

HYCON Hydraulic Breakers (HH15/20/23/25/27)

Problem	Possible Cause	Potential Solution
Breaker does not Start, there is <i>no</i> pressure in P-Hose	Trigger mechanism does not actuate trigger piston correctly.	Dismount top cover, and check and adjust functioning (See workshop manual)
Breaker does not Start, there is pressure in P-Hose	Striking piston stuck in Cylinder	Nose part is tightened too hard (see workshop manual) Seizing between cylinder and striking piston. Clean & Polish or replace components.
	Defective QR Coupler	Check QR Coupler
	Hydraulic Oil supply is made to T-Connection	Switch pump and Tank line
Chisel Falls out during operation	Latch and pin are worn or broken	Replace parts (see workshop manual)
	Chisel bushing is worn	Replace parts (see workshop manual)
	Wrong Chisel Size	Check Fit on Chisel
Breaker works irregularly	Impurities in Hydraulic Oil	Replace Hydraulic Oil and Filter
	Hydraulic Oil level in Power source is too low	Add Hydraulic Oil
	Wrong Chisel Size or worn chisel bushing	Check
Bad Performance	Internal Leak	Dismount valve housing and replace o-rings (see workshop manual)
	Oil flow from the power source is not correct for the breaker	Check Oil Flow
	Accumulator Pressure too low	Charge with Nitrogen aka N ₂ (see Workshop Manual)
	Defective Diaphragm	Replace Diaphragm
	Defective QR Coupler	Check QR Coupler
	Return Pressure is too high	Check Power Source / Hoses
	Hose Diameter is too small	Check Hoses

05/07/2024

To Place Orders:

Call 866-688-1032 or Fax: 877-220-4777

You will need the following items for Customer Service:

- Your purchase order number and/or name
- Company name and billing information
- Customer number
- Shipping address, if different from billing address
- Date Needed
- Products desired and quantity

For detailed product information visit www.DITEQ.com.

Freight Policy U.S. Domestic

Equipment — Freight is paid (Ground Shipment) up to \$500, as one shipment to one location within the continental United States by the carrier of DITEQ's choice for three (3) pieces of equipment shipped of equal value.

Diamond Tools — Freight is prepaid by the shipper and added to the invoice for orders less than \$500.00. Freight is paid (Ground Shipment) to one location within the continental United States by the carrier of DITEQ's choice for orders of \$500.00 or greater.

Parts, Chemicals, and Abrasives — Freight is prepaid by the shipper and added to the invoice.

Orders of \$3,500 or greater in Diamond Tools — Freight is paid (Ground Shipment) to one location within the continental United States by carrier of DITEQ's choice on the total order including all the additional items on the order.

Anything not meeting the exemptions above is Shipped FOB Factory.

We reserve the right to route all shipments via the carrier of DITEQ's choice. Next Day, Priority, or Two-day Service will be added to your invoice or billed collect. **Next-Day, Priority, or Two-Day delivery date is not guaranteed by DITEQ Corporation.**

Shipments requiring special handling or to a residence may incur additional charges. Oversized items may incur additional charges.

Terms and Conditions

Minimum order: For all finished product orders of less than \$50, a \$10 minimum order charge will be added. (Shipping and tax excluded.)

Sales tax will be charged where applicable unless a tax exemption certificate is provided.

Repairs: Carefully package all returned items for repair and send with the following information on a packing slip:

- Your company name, address, and phone number
- Original Invoice (warranty only)
- List of items for repair
- Returned Goods Authorization (RGA) number obtained from Customer Service
- Explanation of repair(s) needed.
- Replacement/Refund: All returned catalog items are subject to a 15% restocking fee. Returned for replacement or refund items should be in original cartons and accompanied by a packing slip with the following information:
- Contact customer service for a Returned Goods Authorization (RGA). (Merchandise cannot be accepted without this authorization.)
- List of items returned and reason(s) for return(s)
- Copy of original invoice(s). Merchandise receipt must be dated no longer than 12 months from the date shipped.

Ship merchandise prepaid to:

DITEQ Corporation, 9876 Pflumm Road, Lenexa, KS 66215

We reserve the right to change and/or modify products and part numbers. Images within this catalog may not reflect the most current product line.

Prices are in U.S. dollars. Prices and specifications are subject to change without notice.

© Copyright 2024 DITEQ Corporation. All rights reserved.

Terms and Conditions / Warranty

LIMITED WARRANTY FOR NEW DITEQ EQUIPMENT

GENERAL PROVISIONS — The warranties described below are provided by DITEQ Corporation ("DITEQ") to the original purchasers of new DITEQ Equipment from DITEQ or authorized DITEQ dealers. Under these warranties, DITEQ will repair or replace, at its option, any covered part that is found to be defective in material or workmanship during the applicable warranty term. Warranty service must be performed by DITEQ or a dealer or service center authorized by DITEQ to sell and/or service the type of product involved, which will use only new or re-manufactured parts or components furnished by DITEQ. Warranty service will be performed without charge to the purchaser for parts. The purchaser will be responsible, however for any service call and/or labor, transportation and/or freight of product to and from DITEQ, the dealer's or service center's place of business, for any premium charged for overtime labor requested by the purchaser, and for any service and/or maintenance not directly related to any defect covered under the warranties below.

WHAT IS WARRANTED — All parts of any new DITEQ Equipment are warranted for the number of months specified below. Component manufacturers offer separate warranties and warranty terms as stated below. Warranty statements required by law covering engine emission-related parts and components are found in the engine operating manual delivered with the machine. Each warranty term begins on the date of product delivery to the purchaser.

HYCON	12 Month
RGC	12 Month
NACECARE	12 Month
SHIBUYA	24 Month
DR. SCHULZE	12 Month
DITEQ/MITO	12 Month

WHAT IS NOT WARRANTED — DITEQ IS NOT RESPONSIBLE FOR THE FOLLOWING:

(1) Used products; (2) Any product that has been modified in ways not approved by DITEQ; (3) Depreciation or damage caused by normal wear, lack of reasonable and proper maintenance, failure to follow operating instructions, misuse, lack of proper protection during storage, transporting or accident; (4) Normal maintenance parts such as belts, bearings, filters, wheels, cutters, etc., and service.

SECURING WARRANTY SERVICE — To secure warranty service, the purchaser must (1) report the product defect to DITEQ, an authorized dealer, or an authorized service center and request repair within the applicable warranty term, (2) present evidence of the warranty start date, and (3) make the product available to DITEQ, the dealer or service center within a reasonable period of time.

LIMITATIONS OF IMPLIED WARRANTIES AND OTHER REMEDIES — To the extent permitted by law, neither DITEQ nor any company affiliated with it makes any warranties, representations, or promises as to the quality, performance, or freedom from defect of the equipment covered by this warranty.

IMPLIED WARRANTIES OF MERCHANTABILITY AND FITNESS FOR A PARTICULAR PURPOSE, TO THE EXTENT APPLICABLE, SHALL BE LIMITED IN DURATION TO THE APPLICABLE PERIOD OF WARRANTY SET FORTH ON THIS PAGE. THE PURCHASER'S ONLY REMEDIES IN CONNECTION WITH THE BREACH OR PERFORMANCE OF ANY WARRANTY ON THE DITEQ EQUIPMENT ARE THOSE SET FORTH ON THIS PAGE. IN NO EVENT WILL THE DEALER, DITEQ, OR ANY COMPANY AFFILIATED WITH DITEQ BE LIABLE FOR INCIDENTAL OR CONSEQUENTIAL DAMAGES. (Note: Some states do not allow limitations on how long an implied warranty lasts or the exclusion or limitation of incidental or consequential damages so the above limitations and exclusions may not apply to you.) This warranty gives you specific legal rights, and you may also have other rights which vary from state to state.

NO DEALER WARRANTY — THE SELLING DEALER MAKES NO WARRANTY OF ITS OWN AND THE DEALER HAS NO AUTHORITY TO MAKE ANY REPRESENTATION OR PROMISE ON BEHALF OF DITEQ OR TO MODIFY THE TERMS OR LIMITATIONS OF THIS WARRANTY IN ANY WAY. If further information is desired, please contact DITEQ.



9876 Pflumm Rd Lenexa, KS 66215 Phone: 816-246-5515 Toll Free: 866-688-1032