



VIVAX
METROTECH



vLoc3 Series Utility Locators



**Locate with speed, accuracy and confidence with the
vLoc3 series of buried utility locators**

www.vxmt.com | www.vivax-metrotech.com



vLoc3-Pro Utility Locator

The **vLoc3-Pro utility locator** introduces new innovative tools for locating buried utilities assuring damage prevention while gathering information for analysis. Distortion is easily detected by the receiver's two sets of 3D antennas and displayed on the bright full-color display. Along with classic locate screens the vLoc3 series locators offer new locate perspective screens:

Vector Locate - for fully-automatic non-walkover locating

Transverse Graph - showing both peak and null simultaneously providing immediate measurement of signal distortion

Plan View - showing the relative orientation of the cable at any angle

Sonde Locate - with guidance arrows leading to the sonde location even when it is vertical

The highly user-configurable vLoc3 series contains eight passive locate modes, fault-find mode, SD (showing direction of outgoing current), and a range of configurable frequencies from 98Hz to 200kHz. Audio and mechanical vibration alerts can also be configured by the user providing warnings for shallow depth, overload, overhead cables, and excessive swinging. Plug-in-play options for the receiver include optional Bluetooth module usable with external GPS devices and MLA foot to locate buried markers. The optional factory fitted Tx-Link (receiver to transmitter radio link) connects the receiver to the transmitter for remote operation up to 300m/985ft.

Real time distortion alerts in the vLoc3-Pro and vLoc3-ML



A green bar graph indicates clean locating conditions with very low distortion

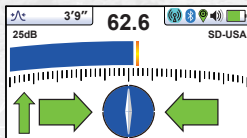


A blue bar graph indicates a medium level of distortion

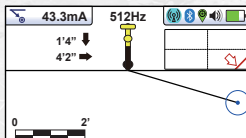


A red bar graph indicates very high distortion. Both Peak and Null locates are subject to significant positional errors

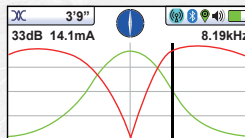
Utility locate modes for vLoc3-Pro and vLoc3-ML



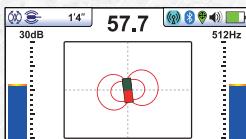
Classic Screen - as in previous vLoc locators, with the addition of three color-coded distortion levels



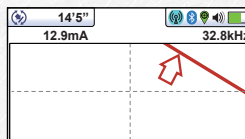
Vector Locate - shows orientation, line position, and distance relative to the locator in 3D



Transverse Plot Screen - is used to display the peak and null to compare distortion shape



Sonde Screen - arrow guidance showing direction to the sonde and depth of cover



Plan View Screen - displays the theoretical line in 2D from above ground in omnidirectional mode



vLoc3-Pro Receiver



Loc3-5Tx
5-Watt Transmitter



Loc3-10Tx
10-Watt Transmitter



vLoc3-ML Marker and Utility Locator

The **vLoc3-ML** with built-in transceiver is designed for contractors and utility companies to accurately detect and pinpoint major brands of buried passive electronic markers. The vLoc3-ML locator combines Vivax-Metrotech's advanced line locating technology and electronic marker system (EMS) detection in a single instrument capable of detecting and measuring the depth of commercially available EMS markers.



Along with classic locate screens the vLoc3 series locators offer new locate perspective screens:

Vector Locate - for fully automatic non-walkover locating

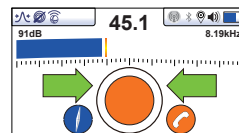
Transverse Graph - showing both peak and null simultaneously providing immediate measurement of signal distortion

Plan View - showing the relative orientation of the cable at any angle

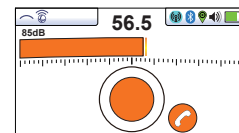
Sonde Locate - with guidance arrows leading to the sonde location even when it is vertical

The highly user-configurable vLoc3-ML includes EMS marker locate mode, eight passive locate modes, fault-find mode, SD (showing direction of outgoing current), and a range of configurable frequencies from 98Hz to 200kHz. Audio and mechanical vibration alerts can also be configured by the user providing warnings for shallow depth, overload, overhead cables, and excessive swinging. Plug-in-play options for the receiver include an optional Bluetooth module usable with external GPS devices. The optional factory fitted Tx-Link (radio link between receiver and transmitter) allows remote operation of the transmitters functions at distances over 300m/985ft.

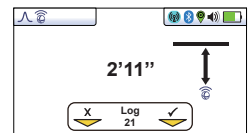
Marker locate modes



Dual Mode - Shows a peak locate response for both utility and marker location simultaneously

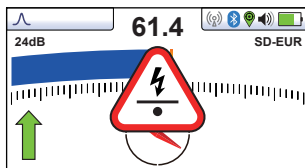


Dedicated Marker Mode - Shows a peak locate response for the buried marker



Marker Depth Readings - along with logging options are shown in the Dedicated Marker Mode

Real-time warnings in the vLoc3-Pro and vLoc3-ML



Real-time warnings are displayed across the receiver's display and accompanied by a mechanical vibration alert. Warnings are logged along with the cover of depth information when using the data logging feature of the receiver. All warnings can be turned on or off through the receiver's setup menu.



Signal Overload - Usually caused by operating very close to a power transformer or placing the unit very close to a transmitter in the Induction mode.



Shallow Cable - Indicates that the locator has detected a cable that is possibly less than 5.0"/15cm deep.

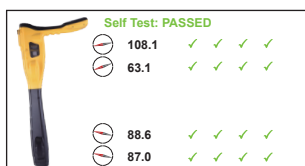


Swing Alert - This indicates that the operator is swinging the locator excessively and could result in misleading information.



Overhead cable - This indicates that the signal is mainly radiating from above traveling along overhead cables.

Self-test feature in the vLoc3 series receivers



Our patented on-the-fly integrated self-test feature provides the operator with total confidence that the equipment is in full working order. The test can be initiated in the field and require no extra equipment and no need to connect to a computer. Direct signal injection is used to confirm the antenna transfer function while further self-test check everything from the circuit boards to the LCD. Measurements are compared to the initial factory calibration and then subsequent self-tests performed to check the system has remained within the specified accuracy. The self-test automatically

checks all six sensors using three frequencies of low, medium, and high. The self-test results are stored in the internal memory with date and time stamps for later extraction using the free MyLocator3 desktop app available from our website.

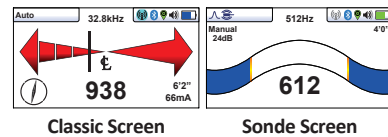
vLoc3-9800 Utility Locator

The **vLoc3-9800** is the updated version of the popular legacy 9860XT and 9890XT locators. Now with updated modern technology we have combined the best of both legacy locators into the vLoc3-9800.

The vLoc3-9800 utility locator introduces new innovative tools for locating buried utilities assuring damage prevention while gathering information for analysis. The highly user-configurable vLoc3-9800 contains two passive locate modes, and a range of configurable frequencies from 98Hz to 200kHz. Depth of cover and current on the line are shown with the push of a button. Pinpoint cable faults using directional arrows with the optional plug-in A-Frame.

The vLoc3-9800's 16-bit color, high visibility LCD, 4.3"/10cm display provides ultra-fast response with left/right arrow indicators while in auto-gain mode or peak locate bar graph with numeric value in manual gain mode. The vLoc3-9800 provides versatility with low frequencies for the telecom, power, and CATV industries as well as higher frequencies for the gas, water and sewer industries.

Options for the vLoc3-9800 include Tx-Link (radio link) from the receiver to transmitter, Bluetooth and plug-in Marker Locator Adapter.



vLoc3-MLA Marker Locator Adapter

The **vLoc3-MLA (Marker Locator Adapter)** is designed for easy, fast and accurate location of buried EMS markers. Once located the MLA will give depth of cover to the buried marker with the touch of a button. The MLA attaches to the bottom of vLoc3-Pro, vLoc3-9800 and vLoc3-5000 receivers.

When attached and plugged in to the receivers two marker related operating modes are enabled. In the dedicated marker mode, the receiver screens show a peak bar graph with the signal strength from the marker, the marker type and depth to the marker. In the dual marker mode all the above are shown in addition to the standard utility locate screen including left/right arrows and compass.

The plug-and-play MLA will detect any one of nine marker types, in good conditions, buried to a depth of 6'/2m and large flat markers to 9'/3m.



The MLA works with the vLoc3-Pro, vLoc3-9800 and vLoc3-5000 receivers

Loc3 Series Broadband Transmitters

The Loc3-series broadband transmitters have selectable induction frequencies from 8kHz to 200kHz and direct-connect frequencies from 98Hz to 200kHz. SD (signal direction), fault find and true resistance measurement up to 1 Mohm are all standard. The two inch by one-inch backlit dot matrix display shows output current, connection type, volts, resistance, frequency, volume, battery condition and high voltage warnings. The Tx-Link (receiver to transmitter radio link) connects the receiver to the transmitter for remote operation up to 300m/985ft. With the Tx-Link the user can change the transmitters frequencies, power output and operate most of the transmitters features remotely.

Packaged in a lightweight, rugged, ergonomic IP54 housing, the transmitter provides consistent current output in direct connect, clamp and induction modes. The transmitter has protection against incoming voltages up to 260V.

The Loc3 series broadband transmitters are available in both 5-watt and 10-watt versions. These transmitters operate on "D" cell alkaline batteries and have rechargeable Li-ion options.

- Transmit up to three frequencies simultaneously
- Fault-find mode for locating sheath to ground faults
- Optional 300m/985ft link to receiver for remote operation



VMap Utility Mapping and Cloud Storage

When used with the vLoc series receivers, the VMap Utility Mapping app records data from the field which is instantly available online or can be shared by using the email function in the app to send .kml or .csv files. Field technicians using a vLoc series receiver can capture and store to the cloud depth readings, GPS coordinates, distance between locates and more.

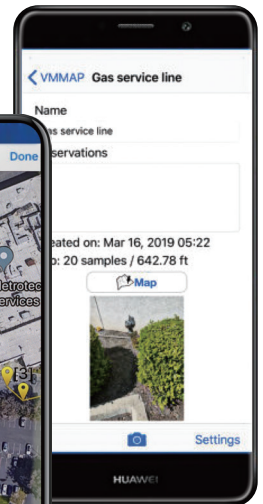
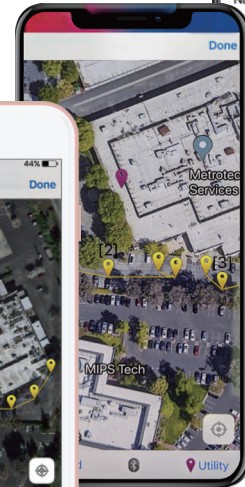
The image capture feature in the app allows the user to attach a JPEG format image to the surveys. This is useful to add points of interest or a snapshot of the completed survey. Users can access the log files with the data captured in the app via the web portal or share it from within the app. The data is compatible with Google Maps, Asset Management and GIS software. The VMap app generates maps in real time giving confidence to the field technician that the data being collected is accurate. Location data is obtained from the mobile phone, the locators GPS or an external GPS device of your choice.

- Uses both Google and Apple Maps
- Low and high GPS accuracy settings
- Plug-and-play Bluetooth pairing to receivers
- Export to a .kml file for use with popular GIS programs
- Compatible with Google Maps, Asset Management and GIS software
- Show multiple utilities on one map with color coded utility drop pins

The VMap application is compatible with both iOS and Android devices.



VMap



MyLocator3 Fleet Management Tool

Manage a single or fleet of vLoc3 series utility locators with the free MyLocator3 app. Configure locators by turning on or off features, selecting which frequencies the user has access to and creating custom startup screens with logo or owners information.

When a locator is connected to a computer running the MyLocator3 software, the program will automatically search our database for the latest software for both the utility locator and desktop application. The utility locator connects to the computer running MyLocator3 by the supplied USB cable.



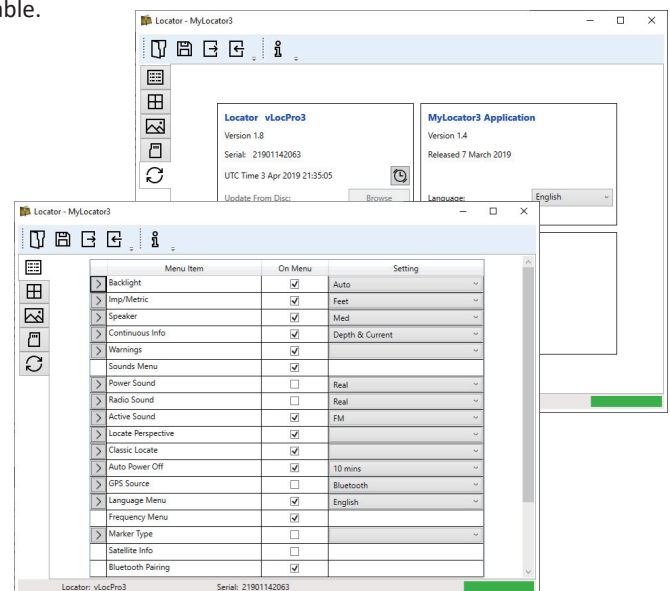
MyLocator3

Data transfer – MyLocator3 app will download the data collected from the locator including timestamps, GPS coordinates, depth measurements, current on the line, and notes entered at the time of locate.

Software updates – MyLocator3 checks for locator software updates and app software updates whenever connected to the Internet.

Personalize – Add owner/user information, a background picture or logo, or a short message to the startup screen.

Lock Feature – The locator's configurations and settings can be locked, enabling equipment or safety officers to ensure that features selected or removed by management cannot be over ridden by the user (requires optional lockout dongle).



Vivax-Metrotech Ltd.

Unit 1, B/C Polden Business Centre, Bristol Road,
Bridgwater, Somerset, TA6 4AW, UK
Tel: +44(0)1793 822679
Email: SalesUK@vxmt.com

Vivax Canada Inc.

41 Courtland Ave Unit 6, Vaughan,
ON L4K 3T3, Canada
Tel: +1-289-846-3010
Fax: +1-905-752-0214
Email: SalesCA@vxmt.com

Metrotech Vertriebs GmbH

Am steinernen Kreuz 10a
D-96110 Schesslitz
Tel: +49 954 277 227 43
Email: SalesEU@vxmt.com

Vivax-Metrotech (Shanghai) Ltd.

3/F No.90, Lane 1122 Qinzhou Rd.(N),
Shanghai, China 200233
Tel: +86-21-5109-9980
Fax: +86-21-2281-9562
Email: SalesCN@vxmt.com.cn

**Vivax-Metrotech Corp.
(Headquarters)**

3251 Olcott Street, Santa Clara,
CA 95054, USA
T/Free: 800-446-3392
Phone: +1 (408) 734-1400
Fax: +1-408-734-1415
Email: SalesUSA@vxmt.com

Vivax-Metrotech SAS

Technoparc - 1 allée du Moulin Berger,
69130 Ecully, France
Tel: +33 (0)472 53 03 03
Fax: +33 (0)472 53 03 13
Email: SalesFR@vxmt.com

Ventas para América Latina

3251 Olcott Street, Santa Clara, CA 95054, USA
T/Free: 800-446-3392
Tel: +1-408-734-1400
Fax: +1-408-743-5597
Email: LatinSales@vxmt.com

INTERMOUNTAIN SALES, INC.

Utility Tools for Today!

**3792 South Lipan Street
Englewood, Colorado 80110**

**Telephone: (303) 762-1070 or 1-800-373-3212
FAX: (303) 762-0996 www.intermntnsales.com**

CONNECT WITH US ON SOCIAL MEDIA



Disclaimer: Product and accessory specifications and availability is subject to change without prior notice.

V1.1 (Nov 2019)